



SV SIRSI VALVES



PINCH AND DIAPHRAGM VALVES

SV SIRSI VALVES

VALVOLE SIRSI A PINZA

La valvola, manuale o pneumatica, è a flusso rettilineo, senza premistoppa.

È costituita da un manicotto flessibile ed elastico, resistente alla corrosione e all'abrasione, solidale con la parte meccanica non soggetto a deformazioni permanenti.

Il manicotto compie un numero elevatissimo di aperture e chiusure in breve tempo.

Viene opportunamente scelto secondo i vari impieghi ed è disponibile in vari tipi di elastomeri: gomma Para, Para alimentare, Neoprene, EPDM, MNBR, Hypalon, Viton, Buna, Butile, Silicone.

Il meccanismo di chiusura è completamente protetto da ogni contaminazione di liquidi corrosivi ed esalazioni di ambiente.



SIRSI PINCH VALVES

Manual or pneumatic valves with straightway flux and no stuffing box.

Flexible and elastic sleeves.

Corrosion and abrasion resistant.

They become an integral part of the machine which is not subject to deformity.

The sleeve can execute an elevated number of openings and closing in a short time. They are a perfect choice for various uses and are available in a variety of types of rubber: natural Para rubber, pure, odourless rubber for the food industry, Neoprene, EPDM, MNBR, Hypalon, Buna, Butyl, Silicon.

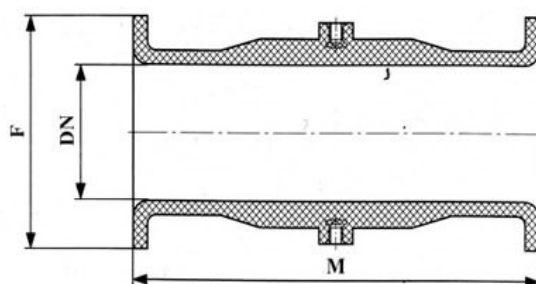
Closing mechanism is completely contamination-free from corrosive liquids and environmental fumes.





Manicotto per Valvole Sirsi / Sleeve for Sirsi pinch Valve

NR (Natural Rubber) – EPDM – NBR – HYPALON – FKM (Viton) SILICONE - NEOPRENE



TIPO -TYPE "D"
TN 2014 / B

DN	M	F
10	75	44
12	75	44
15	80	44
20	80	44
25	115	60
32	115	60
40	160	78
50	210	108
60	205	108

TIPO -TYPE "SD"
TN 2014

DN	M	F
10	135	44
12	135	44
15	135	44
20	160	44
25	170	60
32	190	60
40	210	78
50	240	108

TIPO -TYPE "C"
TN 2015 / B

DN	M	F
65	260	123
80	270	140
100	320	160
125	320	210
150	320	240
200	360	295
250	520	365

TIPO -TYPE "SC"
TN 2015

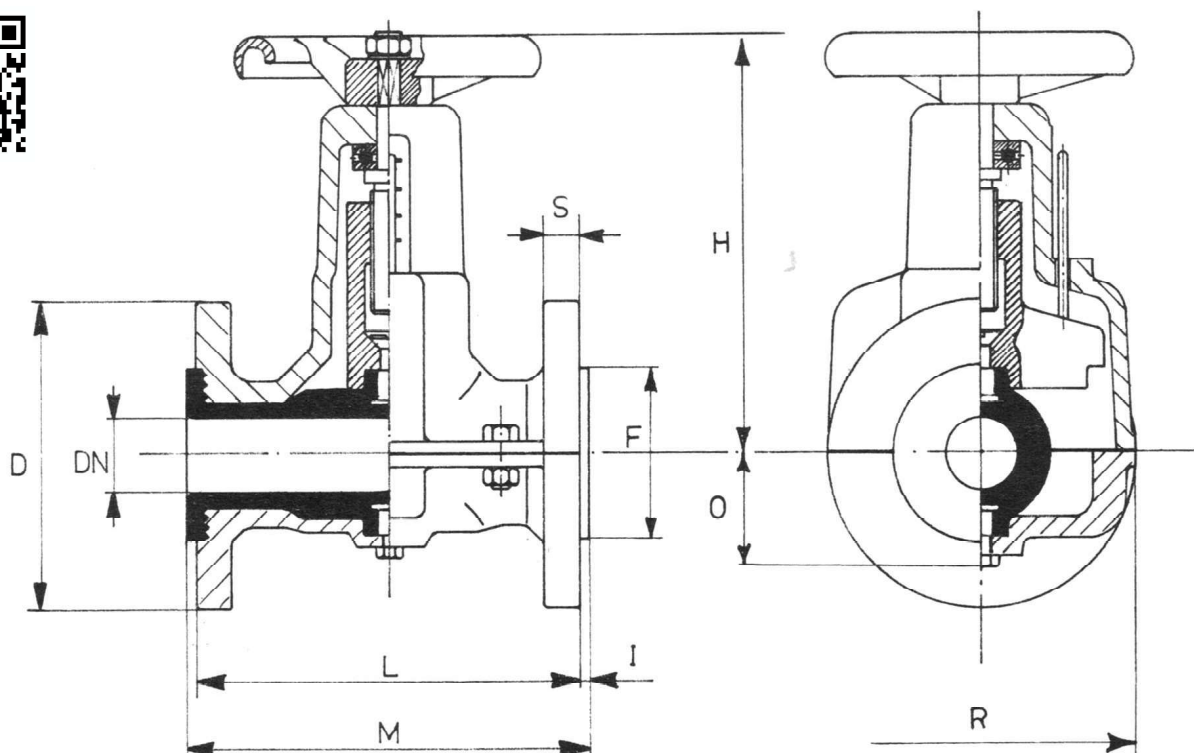
DN	M	F
65	305	125
80	330	140
100	370	160
125	420	210
150	500	240
200	620	295





VALVOLE SIRSI - TIPO "D"
TYPE "D" SIRSI VALVES
VANNES SIRSI - TYPE "D"

TN 2014/B



CARATTERISTICHE E DIMENSIONI - SPECIFICATIONS AND DIMENSIONS - CARACTERISTIQUES ET DIMENSIONS

DN	D	F	H	I	L	M	O	R	S	Press. max. Bar	Pesi - Weights - Poids	
											Alluminio Aluminium Kg.	Ghisa Cast iron Fonte Kg.
10	90	44	80	2	70	75	25	54	14	10	0,800	1,550
12	90	44	80	2	70	75	25	54	14	10	0,800	1,600
15	95	44	85	2	75	80	28	70	14	10	0,850	1,750
20	105	44	85	2	75	80	28	70	16	10	0,950	1,800
25	115	60	140	5	105	115	40	90	16	8	1,700	3,800
32	140	60	140	5	105	115	40	90	18	8	2,100	4,800
40	150	78	170	5	150	160	50	125	18	6	3,000	6,700
50	165	108	185	5	200	210	55	140	20	6	4,000	9,900
60	185	108	185	5	195	205	58	150	20	6	4,800	12,000



Dimensioni flange: secondo norme UNI 2223 - PN 10-16 o DIN 2532 - ND 10. A richiesta, secondo altre norme.

Scartamento tra le estremità delle flange: tipo ridotto.

Meccanismo di chiusura: a semplice effetto.

Corpo: alluminio o ghisa con protezione resistente alla corrosione previa sabbiatura.

Manicotto: gomma para od elastomeri sintetici (Neoprene, Butile, Hycar, Hypalon, Silicone, Viton).

Flange dimensions: to DIN 2532 - ND 10 or UNI 2223 - PN 10-16 standards. Optionally, according to different standards.

Length over flanges: short type.

Mechanism: single-acting.

Valve body: aluminum or cast iron, with corrosion-proof coating, after sandblasting.

Flexible sleeve: natural rubber or synthetic elastomers (Neoprene, Butyl, Hycar, Hypalon, Silicone, Viton).

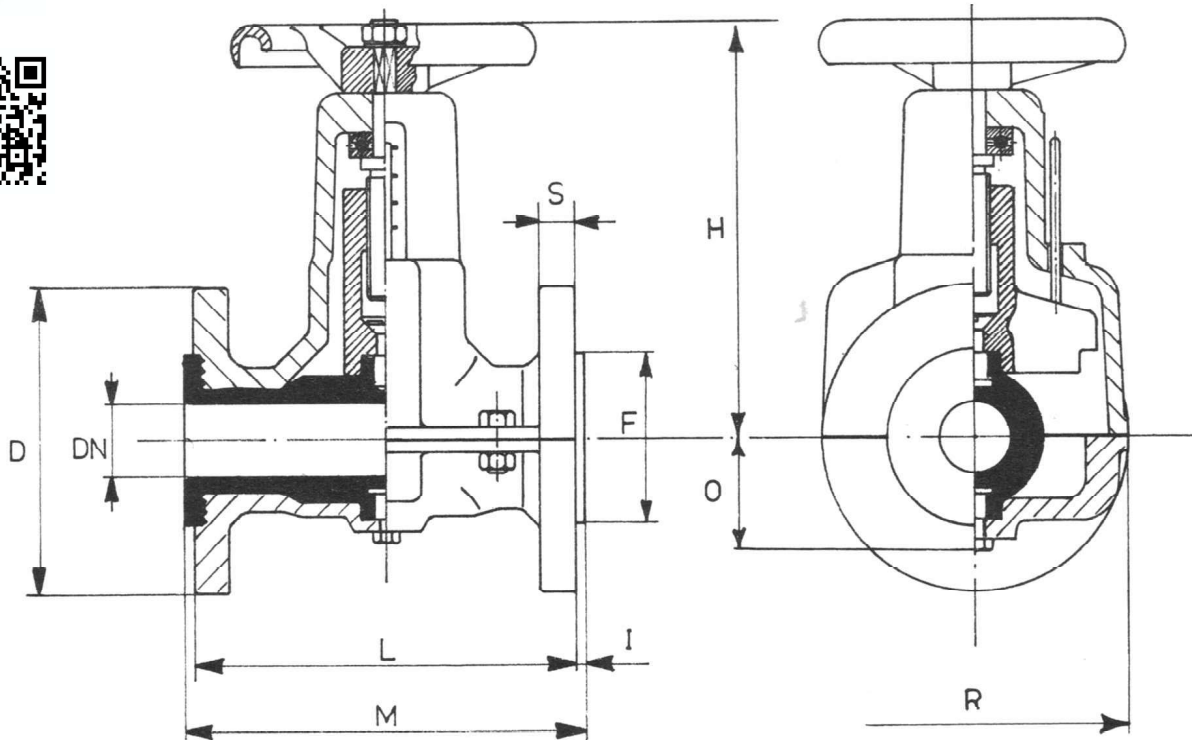
Dimensions des brides: suivant les normes DIN 2532 - ND 10 ou UNI 2223 - PN 10-16. Sur demande, suivant autres normes.

Encombrement: type réduit.

Mécanisme de fermeture: à simple effet.

Corps de la vanne: en aluminium ou en fonte, avec protection anticorrosive après sablage.

Manchon: en caoutchouc naturel ou synthétique (Neoprene, Butyl, Hycar, Hypalon, Silicone, Viton).



CARATTERISTICHE E DIMENSIONI - SPECIFICATIONS AND DIMENSIONS - CARACTERISTIQUES ET DIMENSIONS

DN	D	F	H	I	L	M	O	R	S	Press. max. Bar	Pesi - Weights - Poids	
											Alluminio Aluminum Kg.	Ghisa Cast iron Fonte Kg.
10	90	44	90	2	130	135	25	76	14	10	0,900	2,500
12	90	44	90	2	130	135	25	76	14	10	0,950	2,500
15	95	44	95	2	130	135	28	80	14	10	1,300	2,550
20	105	44	95	5	150	160	28	80	16	10	1,350	2,900
25	115	60	140	5	160	170	40	115	16	8	2,300	4,500
32	140	60	140	5	180	190	40	115	18	8	2,700	5,700
40	150	78	170	5	200	210	50	135	18	6	3,600	9,200
50	165	108	185	5	230	240	55	165	20	6	5,000	11,500



Dimensioni flange: secondo norme UNI 2223 - PN 10-16 o DIN 2532 - ND 10. A richiesta secondo altre norme.

Scartamento tra le estremità delle flange: secondo norme DIN 3202 F1. A richiesta si possono fornire valvole con scartamenti minori (tipo "D").

Meccanismo di chiusura: a semplice effetto.

Corpo: alluminio o ghisa con protezione resistente alla corrosione previa sabbiatura.

Manicotto: gomma para od elastomeri sintetici (Neoprene, Butile, Hycar, Hypalon, Silicone, Viton).

Flange dimensions: to DIN 2532 - ND 10 or UNI 2223 - PN 10-16 standards. Optionally, according to different standards.

Length over flanges: to DIN 3202 F1 standards. Optionally shorter valves can be supplied (type "D").

Mechanism: single-acting.

Valve body: aluminum or cast iron, with corrosion-proof coating, after sandblasting.

Flexible sleeve: natural rubber or synthetic elastomers (Neoprene, Butyl, Hycar, Hypalon, Silicone, Viton).

Dimensions des brides: suivant les normes DIN 2532 - ND 10 ou UNI 2223 - PN 10-16. Sur demande, suivant autres normes.

Encombrement: longueur totale de bride à bride suivant normes DIN 3202 F1. Sur demande on peut fournir des vannes plus courtes (type "D").

Mécanisme de fermeture: à simple effet.

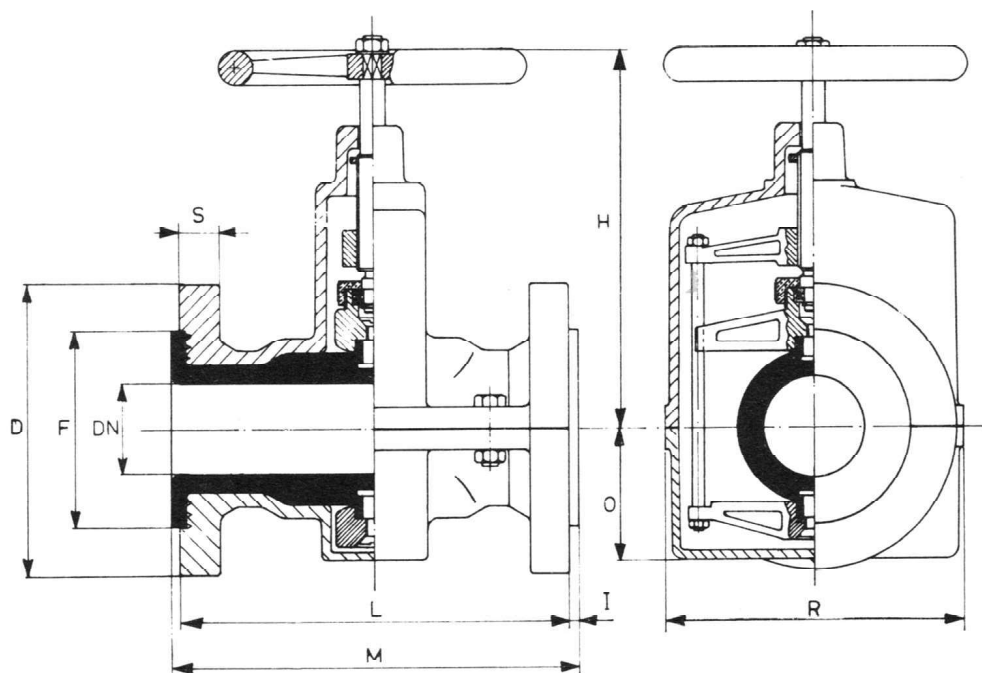
Corps de la vanne: en aluminium ou en fonte, avec protection anticorrosive après sablage.

Manchon: en caoutchouc naturel ou synthétique (Neoprene, Butyl, Hycar, Hypalon, Silicone, Viton).



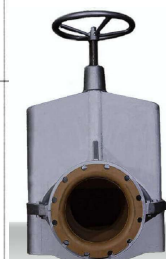
VALVOLE SIRSI - TIPO "C"
TYPE "C" SIRSI VALVES
VANNES SIRSI - TYPE "C"

TN 2015/B



CARATTERISTICHE E DIMENSIONI - SPECIFICATIONS AND DIMENSIONS - CARACTERISTIQUES ET DIMENSIONS

DN	D	F	H	I	L	M	O	R	S	Press. max. Bar	Pesi - Weights - Poids	
											Alluminio Aluminium Kg.	Ghisa Cast iron Fonte Kg.
65	185	123	280	5	250	260	95	210	20	5	9,850	21,000
80	200	140	370	10	250	270	105	250	22	4	13,400	25,200
100	220	160	360	10	300	320	125	280	22	4	17,000	31,000
125	250	210	500	10	300	320	140	330	24	3	22,800	46,000
150	285	240	575	10	300	320	160	370	24	3	30,000	57,000
200	340	295	730	10	340	360	200	460	26	2	41,000	82,000
250	395	365	870	10	500	520	250	600	28	2	88,000	-



Dimensioni flange: secondo norme UNI 2223 - PN 10-16 o DIN 2532 - ND 10. A richiesta, secondo altre norme.

Scartamento tra le estremità delle flange: tipo ridotto.

Meccanismo di chiusura: a doppio effetto.

Corpo: alluminio o ghisa con protezione resistente alla corrosione previa sabbiatura.

Manicotto: gomma para od elastomeri sintetici (Neoprene, Butile, Hycar, Hypalon, Silicone, Viton).

Flange dimensions: to DIN 2532 - ND 10 or UNI 2223 - PN 10-16 standards. Optionally, according different standards.

Length over flanges: short type.

Mechanism: double-acting.

Valve body: aluminum or cast iron, with corrosion-proof coating, after sandblasting.

Flexible sleeve: natural rubber or synthetic elastomers (Neoprene, Butyl, Hycar, Hypalon, Silicone, Viton).

Dimensions des brides: suivant les normes DIN 2532 - ND 10 ou UNI 2223 - PN 10-16. Sur demande, suivant autres normes.

Encombrement: type réduit.

Mécanisme de fermeture: à double effet.

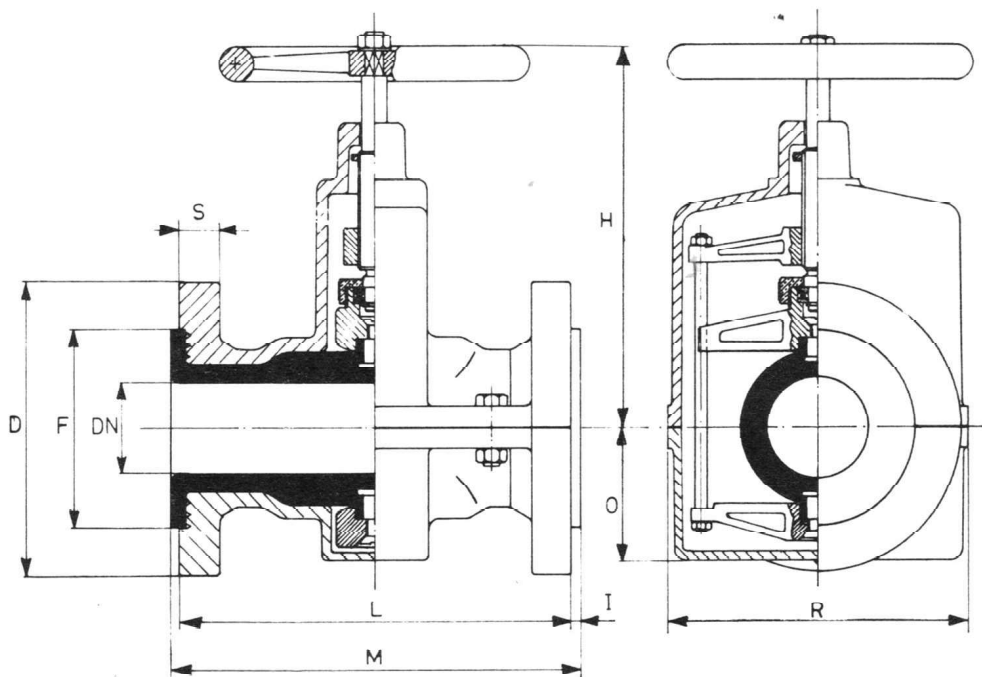
Corps de la vanne: en aluminium ou en fonte, avec protection anticorrosive après sablage.

Manchon: en caoutchouc naturel ou synthétique (Neoprene, Butyl, Hycar, Hypalon, Silicone, Viton).



VALVOLE SIRSI - TIPO "SC"
TYPE "SC" SIRSI VALVES
VANNES SIRSI - TYPE "SC"

TN 2015



CARATTERISTICHE E DIMENSIONI - SPECIFICATIONS AND DIMENSIONS - CARACTERISTIQUES ET DIMENSIONS

DN	D	F	H	I	L	M	O	R	S	Press. max. Bar	Pesi - Weights - Poids	
											Alluminio Aluminum Kg.	Ghisa Cast iron Fonte Kg.
65	185	125	280	7	290	305	95	210	20	5	12,000	23,000
80	200	140	340	10	310	330	105	250	22	4	13,000	29,500
100	220	160	360	10	350	370	125	280	22	4	20,000	36,000
125	250	210	500	10	400	420	140	330	24	3	24,000	56,500
150	285	240	565	10	480	500	160	370	24	3	35,000	72,500
200	340	295	730	10	600	620	200	460	26	2	49,500	85,500



Dimensioni flange: secondo norme UNI 2223 - PN 10-16 o DIN 2532 - ND 10. A richiesta, secondo altre norme.

Scartamento tra le estremità delle flange: secondo norme DIN 3202 F1. A richiesta si possono fornire valvole con scartamenti minori (tipo "C").

Meccanismo di chiusura: a doppio effetto.

Corpo: alluminio o ghisa con protezione resistente alla corrosione previa sabbiatura.

Manicotto: gomma para od elastomeri sintetici (Neoprene, Butile, Hycar, Hypalon, Silicone, Viton).

Flange dimensions: to DIN 2532 - ND 10 or UNI 2223 - PN 10-16 standards. Optionally, according different standards.

Length over flanges: to DIN 3202 F1 standards. Optionally shorter valves can be supplied (type "C").

Mechanism: double-acting.

Valve body: aluminum or cast iron, with corrosion-proof coating, after sandblasting.

Flexible sleeve: natural rubber or synthetic elastomers (Neoprene, Butyl, Hycar, Hypalon, Silicone, Viton).

Dimensions des brides: suivant les normes DIN 2532 - ND 10 ou UNI 2223 - PN 10-16. Sur demande, suivant autres normes.

Encombrement: longueur totale de bride à bride suivant normes DIN 3202 F1. Sur demande on peut fournir des vannes plus courtes (type "C").

Mécanisme de fermeture: à double effet.

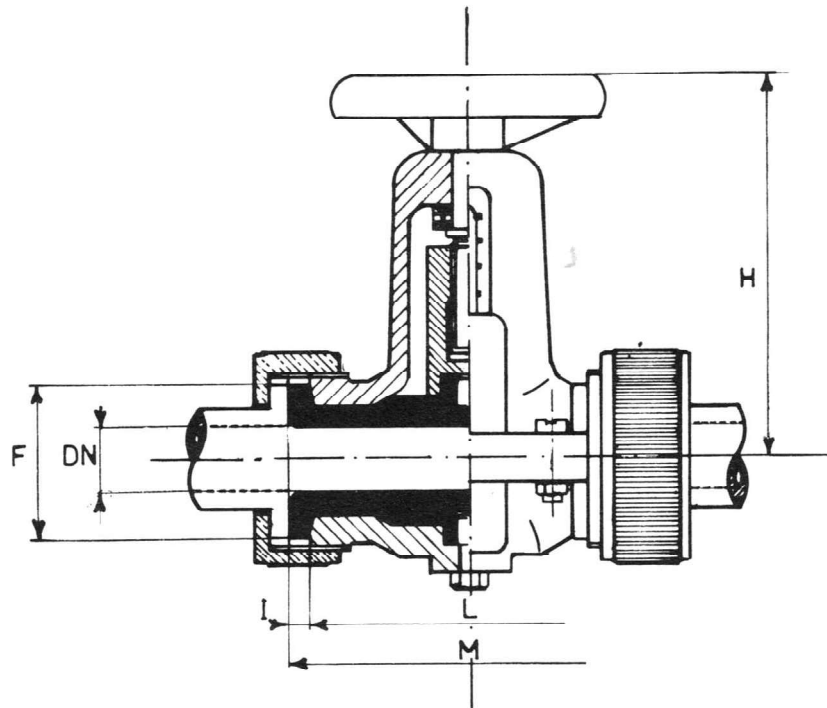
Corps de la vanne: en aluminium ou en fonte, avec protection anticorrosive après sablage.

Manchon: en caoutchouc naturel ou synthétique (Neoprene, Butyl, Hycar, Hypalon, Silicone, Viton).



VALVOLE SIRSI - TIPO "M"
 TYPE "M" SIRSI VALVES
 VANNES SIRSI - TYPE "M"

TN 2017



CARATTERISTICHE E DIMENSIONI - SPECIFICATIONS AND DIMENSIONS - CARACTERISTIQUES ET DIMENSIONS

DN	D	F	H	I	L	M	O	Press. max. Bar	Pesi - Weights - Poids	
									Alluminio Aluminum Aluminium Kg.	Ghisa Cast iron Fonte Kg.
10	—	30	80	5	65	75	—	10	0,700	1,200
12	—	30	80	5	65	75	—	10	0,700	1,200
15	—	40	85	5	75	85	—	10	0,800	1,400
20	—	40	85	5	75	85	—	10	0,900	1,700
25	—	53	140	5	110	120	—	8	1,900	3,300
32	—	53	140	5	110	120	—	8	2,000	4,000
40	—	80	150	8	155	170	—	6	2,700	6,000
50	—	108	185	8	200	215	—	6	4,000	8,600



Caratteristiche costruttive:
 come per il tipo "D"
 (TN 2014/B).

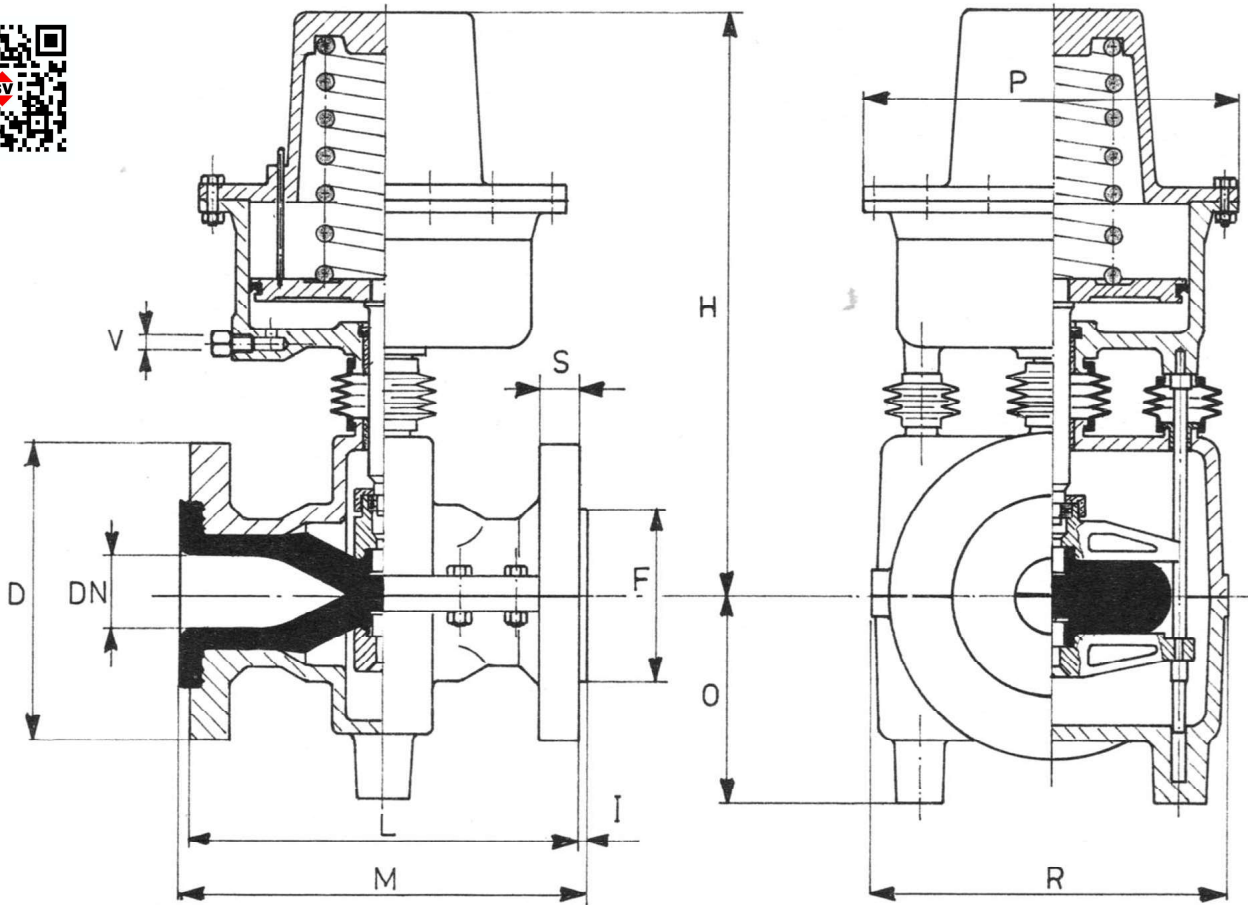
Conessioni: con due ghiera filettate.

Construction features: as per type "D" (TN 2014/B).

Ends: with two screwed couplings.

Caractéristiques constructives:
 comme pour le type "D"
 (TN 2014/B).

Extrémités: avec deux manchons taraudés.



CARATTERISTICHE E DIMENSIONI - SPECIFICATIONS AND DIMENSIONS - CARACTERISTIQUES ET DIMENSIONS

DN	D	F	H	I	L	M	O	P	R	S	V	Press. max. Bar	Pesi Weights - Poids Kg.
10/12	90	44	245	2	130	135	25	150	76	14	1/4" G	8	3,500
15	95	44	245	2	130	135	28	150	80	14	1/4" G	8	3,800
20	105	44	253	5	150	160	28	150	80	16	1/4" G	5	4,400
25	115	60	265	5	160	170	40	150	115	16	1/4" G	5	5,200
32	140	60	265	5	180	190	40	150	115	18	1/4" G	5	5,500
40	150	78	365	5	200	210	50	200	135	18	1/4" G	4	11,000
50	165	108	380	5	230	240	55	200	165	20	1/4" G	4	12,000
65	185	123	400	7	290	305	60	200	185	20	1/4" G	3,5	16,200
80	200	140	560	10	310	330	180	285	250	22	1/4" G	3,5	32,000
100	220	160	575	10	350	370	205	285	300	22	1/4" G	3,5	33,000
125	250	210	920	10	400	420	210	375	330	24	1/4" G	2,5	68,000
150	285	240	940	10	480	500	245	375	400	24	1/4" G	2	75,000
200	340	295	1100	10	600	620	320	450	460	26	1/4" G	2	135,000



Valvola costantemente chiusa in posizione di riposo. Apertura mediante immissione di aria compressa nel cilindro pneumatico.

Cilindro e pistone: in lega di alluminio.

Corpo: normalmente in alluminio.

Caratteristiche costruttive: come per i tipi "SD" (TN 2014) e "SC" (TN 2015).

Normally closed valve. Delivery of compressed air to the pneumatic cylinder opens the valve.

Cylinder and piston: aluminum alloy.

Valve body: normally aluminum.

Construction features: as per types "SD" (TN 2014) and "SC" (TN 2015).

Vanne normalmente fermée. Ouverture de la vanne par admission d'air comprimé dans le cylindre pneumatique.

Cylindre et piston: en alliage en aluminium.

Corps de la vanne: normalement en aluminium.

Caractéristiques constructives: comme pour les types "SD" (TN 2014) et "SC" (TN 2015).

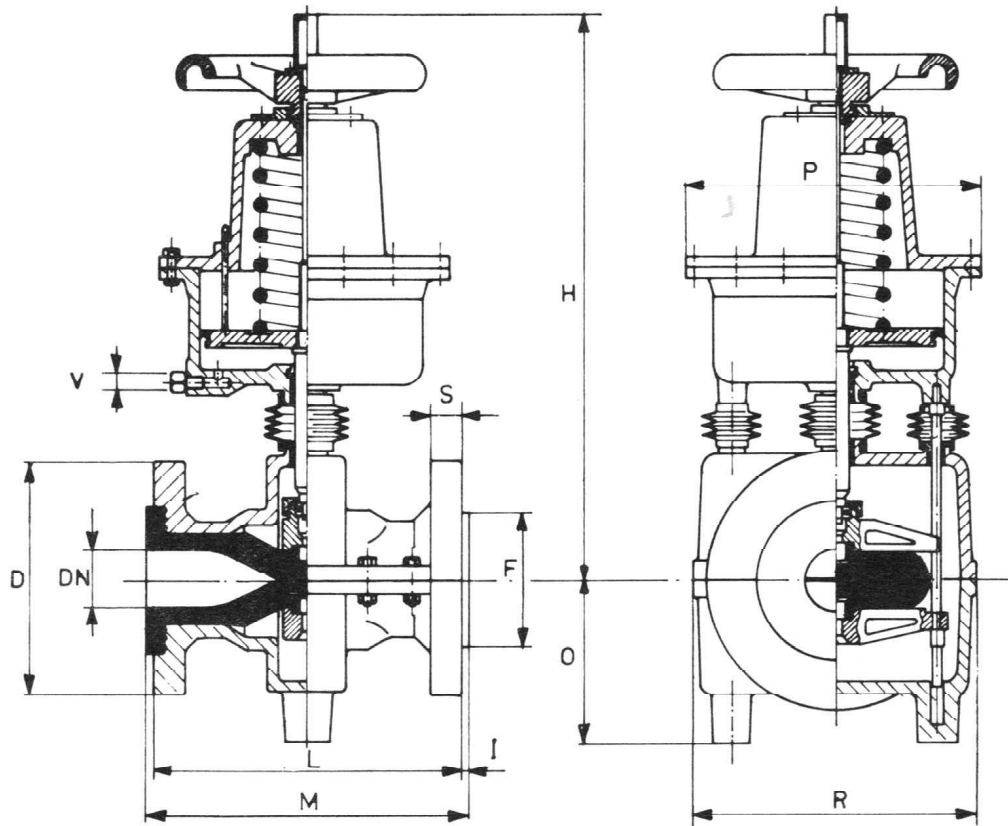


VALVOLE SIRSI - TIPO "P.A.V." PRESSIONE APRE -
CON VOLANTINO PER L'APERTURA MANUALE
D'EMERGENZA

TYPE "P.A.V." PRESSURE OPENING SIRSI VALVES -
WITH EMERGENCY HANDWHEEL

VANNES SIRSI - TYPE "P.O.V." PRESSION OUVRE -
AVEC VOLANT DE SECOURS

TN 2023



CARATTERISTICHE E DIMENSIONI - SPECIFICATIONS AND DIMENSIONS - CARACTERISTIQUES ET DIMENSIONS

DN	D	F	H	I	L	M	O	P	R	S	V	Press. max. Bar	Pesi Weights - Poids Kg.
10/12	90	44	310	2	130	135	25	150	76	14	1/4" G	8	4,000
15	95	44	305	2	130	135	28	150	80	14	1/4" G	8	4,200
20	105	44	305	5	150	160	28	150	80	16	1/4" G	5	4,500
25	115	60	330	5	160	170	40	150	115	16	1/4" G	5	5,200
32	140	60	330	5	180	190	40	150	115	18	1/4" G	5	5,700
40	150	78	445	5	200	210	50	200	135	18	1/4" G	4	11,500
50	165	108	460	5	230	240	55	200	165	20	1/4" G	4	13,100
65	185	123	505	7	290	305	60	200	185	20	1/4" G	3,5	16,700
80	200	140	745	10	310	330	180	285	250	22	1/4" G	3,5	31,000
100	220	160	745	10	350	370	205	285	300	22	1/4" G	3,5	40,000
125	250	210	1145	10	400	420	210	375	330	24	1/4" G	2,5	61,500
150	285	240	1160	10	480	500	245	375	400	24	1/4" G	2	75,500
200	340	295	1450	10	600	620	320	450	460	26	1/4" G	2	130,000



Valvola costantemente chiusa in posizione di riposo. Apertura mediante immissione di aria compressa nel cilindro pneumatico. Dotata di volantino per l'apertura manuale di emergenza.

Cilindro e pistone: in lega di alluminio.

Corpo: normalmente in alluminio.

Caratteristiche costruttive: come per i tipi "SD" (TN 2014) e "SC" (TN 2015).

Normally closed valve. Delivery of compressed air to the pneumatic cylinder opens the valve. With handwheel for emergency manual opening operation.

Cylinder and piston: aluminum alloy.

Valve body: normally aluminum.

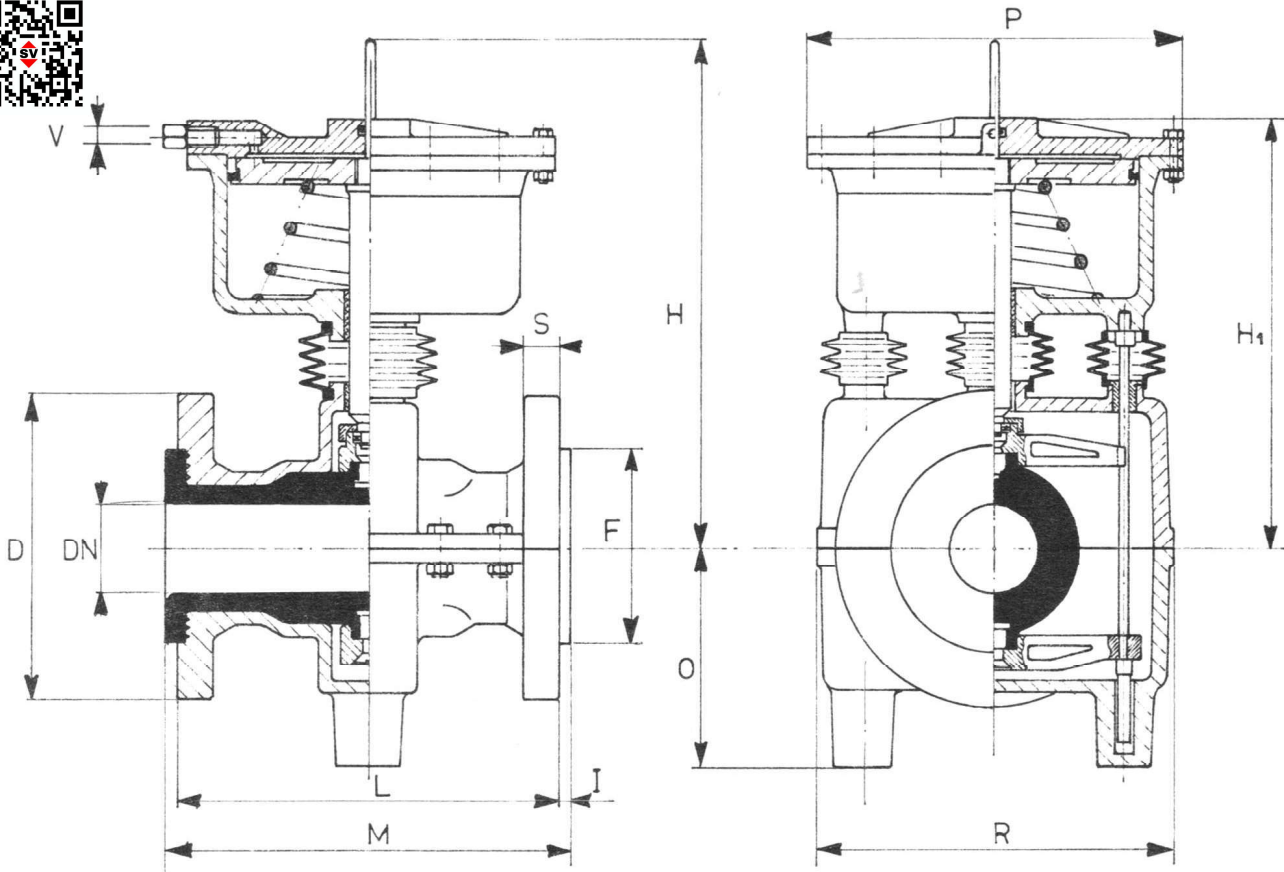
Construction features: as per types "SD" (TN 2014) and "SC" (TN 2015).

Vanne normalmente fermée. Ouverture de la vanne par admission d'air comprimé dans le cylindre pneumatique. Avec volant de secours pour l'ouverture manuelle.

Cylindre et piston: en alliage en aluminium.

Corps de la vanne: normalement en aluminium.

Caractéristiques constructives: comme pour les types "SD" (TN 2014) et "SC" (TN 2015).



CARATTERISTICHE E DIMENSIONI - SPECIFICATIONS AND DIMENSIONS - CARACTERISTIQUES ET DIMENSIONS

DN	D	F	H	H ₁	I	L	M	O	P	R	S	V	Press. max. Bar	Pesi Weights - Poids Kg.
10/12	90	44	220	185	2	130	135	25	150	76	14	1/4" G	10	3,000
15	95	44	220	185	2	130	135	28	150	80	14	1/4" G	10	3,500
20	105	44	220	185	5	150	160	28	150	80	16	1/4" G	10	3,800
25	115	60	280	205	5	160	170	40	150	115	16	1/4" G	8	4,400
32	140	60	280	205	5	180	190	40	150	115	18	1/4" G	8	5,000
40	150	78	360	255	5	200	210	50	200	135	18	1/4" G	6	7,000
50	165	108	380	265	5	230	240	55	200	165	20	1/4" G	6	10,000
65	185	123	400	290	7	290	305	60	200	185	20	1/4" G	5	12,800
80	200	140	580	420	10	310	330	180	285	250	22	1/4" G	4	26,500
100	220	160	590	420	10	350	370	205	285	300	22	1/4" G	4	32,500
125	250	210	800	590	10	400	420	210	375	330	24	1/4" G	3	60,500
150	285	240	850	610	10	480	500	245	375	400	24	1/4" G	3	69,500
200	340	295	1000	750	10	600	620	320	450	460	28	1/4" G	2	105,000



Valvola costantemente aperta in posizione di riposo. Chiusura mediante immissione di aria compressa nel cilindro pneumatico.

Cilindro e pistone: in lega di alluminio.

Corpo: normalmente in alluminio.

Caratteristiche costruttive: come per i tipi "SD" (TN 2014) e "SC" (TN 2015).

Normally opened valve. Delivery of compressed air to the pneumatic cylinder closes the valve.

Cylinder and piston: aluminum alloy.

Valve body: normally aluminum.

Construction features: as per types "SD" (TN 2014) and "SC" (TN 2015).

Vanne normalmente ouverte. Fermeture de la vanne par admission d'air comprimé dans le cylindre pneumatique.

Cylindre et piston: en alliage en aluminium.

Corps de la vanne: normalmente en aluminium.

Caractéristiques constructives: comme pour les types "SD" (TN 2014) et "SC" (TN 2015).

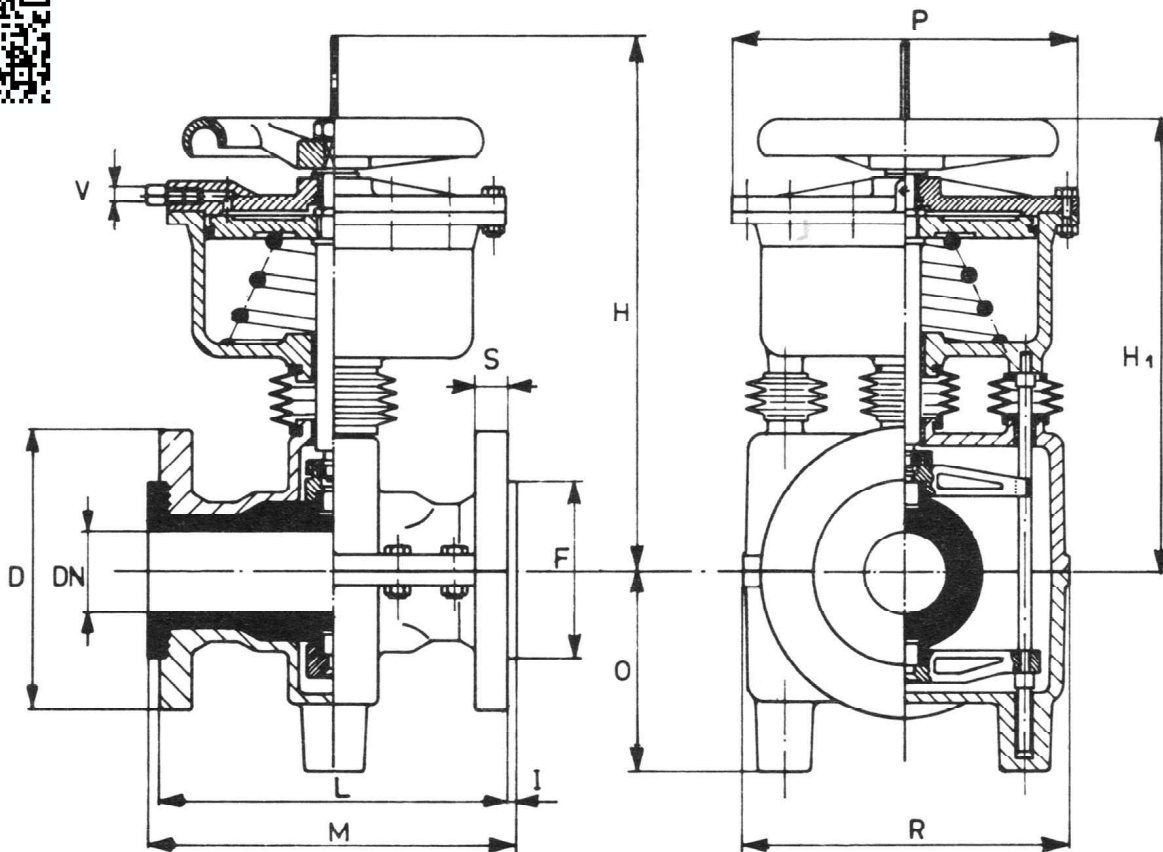


VALVOLE SIRSI - TIPO "P.C.V." - PRESSIONE CHIUDE - CON VOLANTINO PER LA CHIUSURA MANUALE D'EMERGENZA

TYPE "P.C.V." PRESSURE CLOSING SIRSI VALVES - WITH EMERGENCY HANDWHEEL

VANNES SIRSI - TYPE "P.F.V." - PRESSION FERME - AVEC VOLANT DE SECOURS

TN 2020



CARATTERISTICHE E DIMENSIONI - SPECIFICATIONS AND DIMENSIONS - CARACTERISTIQUES ET DIMENSIONS

DN	D	F	H	H ₁	I	L	M	O	P	R	S	V	Press. max. Bar	Pesi Weights - Poids Kg.
10/12	90	44	270	235	2	130	135	25	150	76	14	1/4" G	10	3,100
15	95	44	270	235	2	130	135	28	150	80	14	1/4" G	10	3,600
20	105	44	270	235	5	150	160	28	150	80	16	1/4" G	10	4,200
25	115	60	290	255	5	160	170	40	150	115	16	1/4" G	8	5,000
32	140	60	290	255	5	180	190	40	150	115	18	1/4" G	8	5,500
40	150	78	390	310	5	200	210	50	200	135	18	1/4" G	6	7,800
50	165	108	400	320	5	230	240	55	200	165	20	1/2" G	6	11,500
65	185	123	425	335	7	290	305	60	200	185	20	1/2" G	5	14,000
80	200	140	590	460	10	310	330	180	285	250	22	1/2" G	4	28,000
100	220	160	600	460	10	350	370	205	285	300	22	1/2" G	4	34,000
125	250	210	840	650	10	400	420	210	375	330	24	1/2" G	3	65,200
150	285	240	855	665	10	480	500	245	375	400	24	1/2" G	3	70,000
200	340	295	1050	800	10	600	620	320	450	460	28	1/2" G	2	109,500



Valvola costantemente aperta in posizione di riposo. Chiusura mediante immissione di aria compressa nel cilindro pneumatico. Dotata di volantino per la chiusura manuale di emergenza.

Cilindro e pistone: in lega di alluminio.

Corpo: normalmente in alluminio.

Caratteristiche costruttive: come per i tipi "SD" (TN 2014) e "SC" (TN 2015).

Normally opened valve. Delivery of compressed air to the pneumatic cylinder closes the valve. With handwheel for emergency manual closing operation.

Cylinder and piston: aluminum alloy.

Valve body: normally aluminum.

Construction features: as per types "SD" (TN 2014) and "SC" (TN 2015).

Vanne normalmente ouverte. Fermeture de la vanne par admission d'air comprimé dans le cylindre pneumatique. Avec volant de secours pour la fermeture manuelle.

Cylindre et piston: en alliage en aluminium.

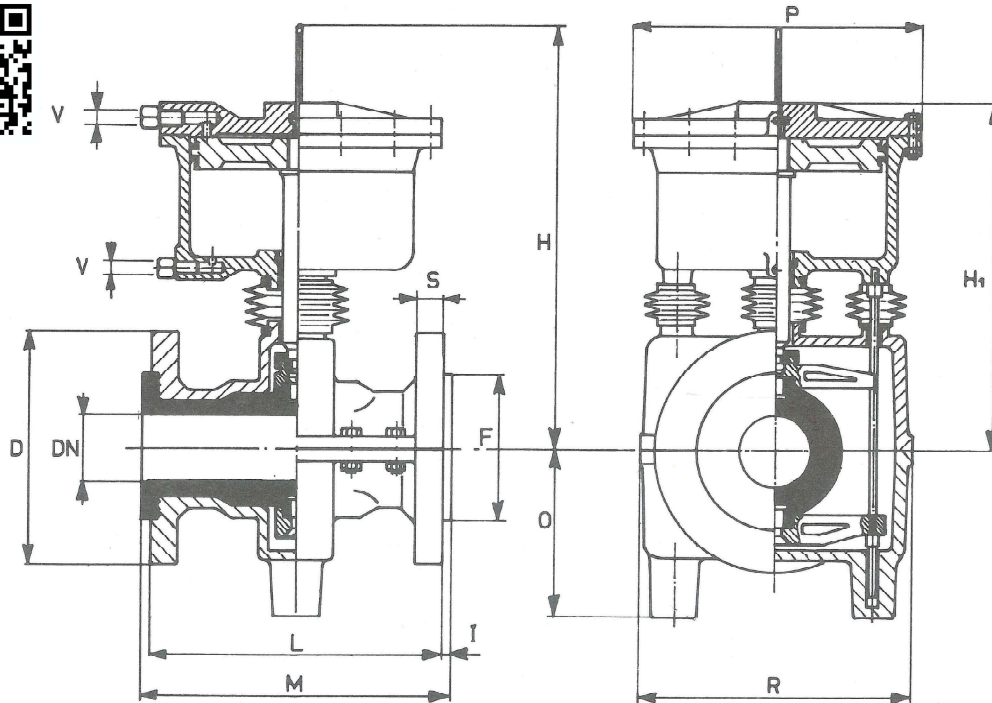
Corps de la vanne: normalement en aluminium.

Caractéristiques constructives: comme pour les types "SD" (TN 2014) et "SC" (TN 2015).



VALVOLE SIRSI - TIPO "PAC" PRESSIONE APRE-CHIUDE
 TYPE "PAC" PRESSURE OPENING-CLOSING SIRSI VALVES
 VANNES SIRSI - TYPE "POF" PRESSION OUVRE-FERME

TN 2022/D



CARATTERISTICHE E DIMENSIONI - SPECIFICATIONS AND DIMENSIONS - CARACTERISTIQUES ET DIMENSIONS

DN	D	F	H	H ₁	I	L	M	O	P	R	S	V	Press. max. Bar	Pesi Weights - Poids Kg
10/12	90	44	220	185	2	130	135	25	150	76	14	1/4" G	8	3,000
15	95	44	220	185	2	130	135	28	150	80	14	1/4" G	8	3,500
20	105	44	220	185	5	150	160	28	150	80	16	1/4" G	5	3,800
25	115	60	280	205	5	160	170	40	150	115	16	1/4" G	5	4,400
35	140	60	280	205	5	180	190	40	150	115	18	1/4" G	5	5,000
40	150	78	360	255	5	200	210	50	200	135	18	1/4" G	4	7,000
50	165	108	380	265	5	230	240	55	200	165	20	1/4" G	4	10,000
65	185	123	400	290	7	290	305	60	200	185	20	1/4" G	3,5	12,500
80	200	140	580	420	10	310	330	180	285	250	22	1/4" G	3,5	26,000
100	220	160	580	405	10	350	370	205	285	300	22	1/4" G	3,5	32,000
125	250	210	800	590	10	400	420	210	375	330	24	1/4" G	2,5	60,000
150	285	240	850	610	10	480	500	245	375	400	24	1/4" G	2	68,000
200	340	295	1000	750	10	600	620	320	450	460	28	1/4" G	2	104,200



Apertura e chiusura mediante immissione di aria compressa nel cilindro pneumatico.

Cilindro e pistone: in lega di alluminio.

Corpo: normalmente in alluminio.

Caratteristiche costruttive: come per i tipi "SD" (TN 2014) e "SC" (TN 2015).

Delivery of compressed air to the pneumatic cylinder opens and closes the valve.

Cylinder and piston: aluminum alloy.

Valve body: normally aluminum.

Construction features: as per types "SD" (TN 2014) and "SC" (TN 2015).

Ouverture et fermeture de la vanne par admission d'air comprimé dans le cylindre pneumatique.

Cylindre et piston: en alliage en aluminium.

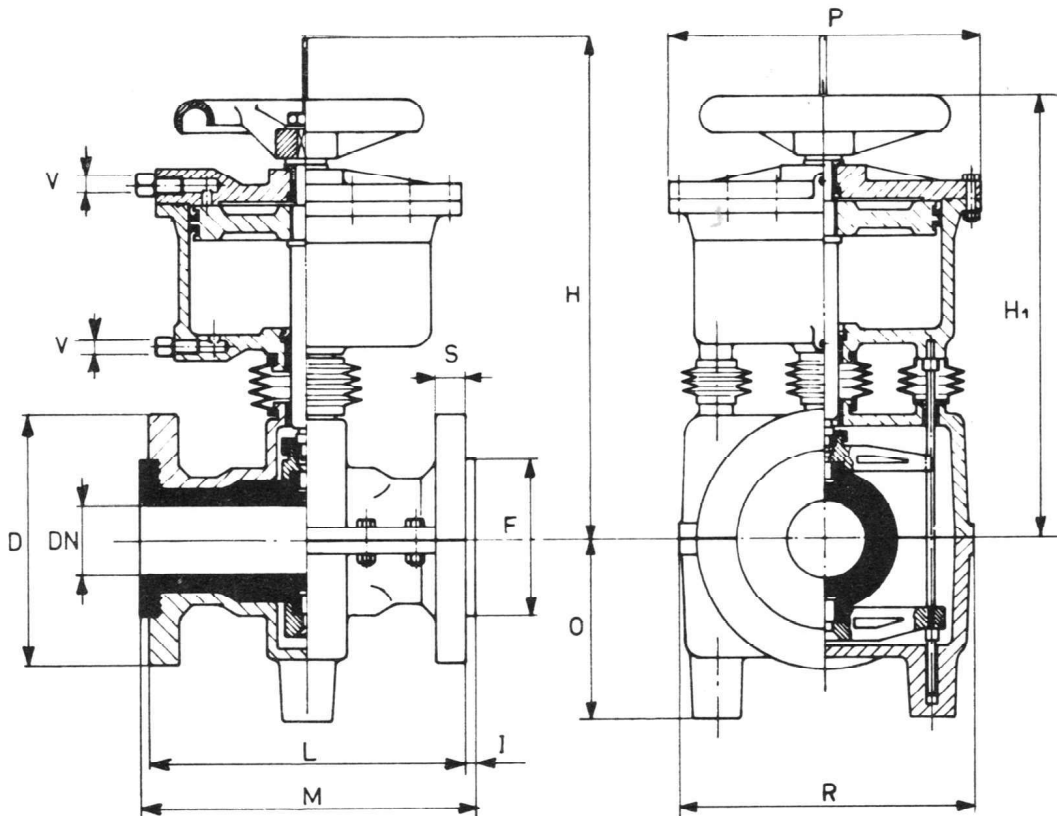
Corps de la vanne: normalement en aluminium.

Caractéristiques constructives: comme pour les types "SD" (TN 2014) et "SC" (TN 2015).



VALVOLE SIRSI - TIPO "PACV" PRESSIONE
 APRE-CHIUDE CON VOLANTINO DI EMERGENZA
 TYPE "PACV" PRESSURE OPENING-CLOSING
 SIRSI VALVES WITH EMERGENCY HANDWHEEL
 VANNES SIRSI - TYPE "POFV" PRESSION
 OUVRE-FERME AVEC VOLANT DE SECOURS

TN 2023/D



CARATTERISTICHE E DIMENSIONI - SPECIFICATIONS AND DIMENSIONS - CARACTERISTIQUES ET DIMENSIONS

DN	D	F	H	H ₁	I	L	M	O	P	R	S	V	Press. max. Bar	Pesi Weights - Poids Kg.
10/12	90	44	270	235	2	130	135	25	150	76	14	1/4" G	8	3,000
15	95	44	270	235	2	130	135	28	150	80	14	1/4" G	8	3,500
20	105	44	270	235	5	150	160	28	150	80	16	1/4" G	5	4,100
25	115	60	290	255	5	160	170	40	150	115	16	1/4" G	5	5,000
32	140	60	290	255	5	180	190	40	150	115	18	1/4" G	5	5,500
40	150	78	390	310	5	200	210	50	200	135	18	1/4" G	4	7,300
50	165	108	400	320	5	230	240	55	200	165	20	1/4" G	4	11,000
65	185	123	425	335	7	290	305	60	200	185	20	1/4" G	3,5	13,500
80	200	140	590	460	10	310	330	180	285	250	22	1/4" G	3,5	26,000
100	220	160	600	460	10	350	370	205	285	300	22	1/4" G	3,5	32,500
125	250	210	840	650	10	400	420	210	375	330	24	1/4" G	2,5	65,100
150	285	240	855	665	10	480	500	245	375	400	24	1/4" G	2	75,100
200	340	295	1050	800	10	600	620	320	450	460	28	1/4" G	2	106,500



Apertura e chiusura mediante immissione di aria compressa nel cilindro pneumatico. Dotata di volantino per la manovra manuale di emergenza.

Cilindro e pistone: in lega di alluminio.

Corpo: normalmente in alluminio.

Caratteristiche costruttive: come per i tipi "SD" (TN 2014) e "SC" (TN 2015).

Delivery of compressed air to the pneumatic cylinder opens and closes the valve. With handwheel for emergency manual operation.

Cylinder and piston: aluminum alloy.

Valve body: normally aluminum.

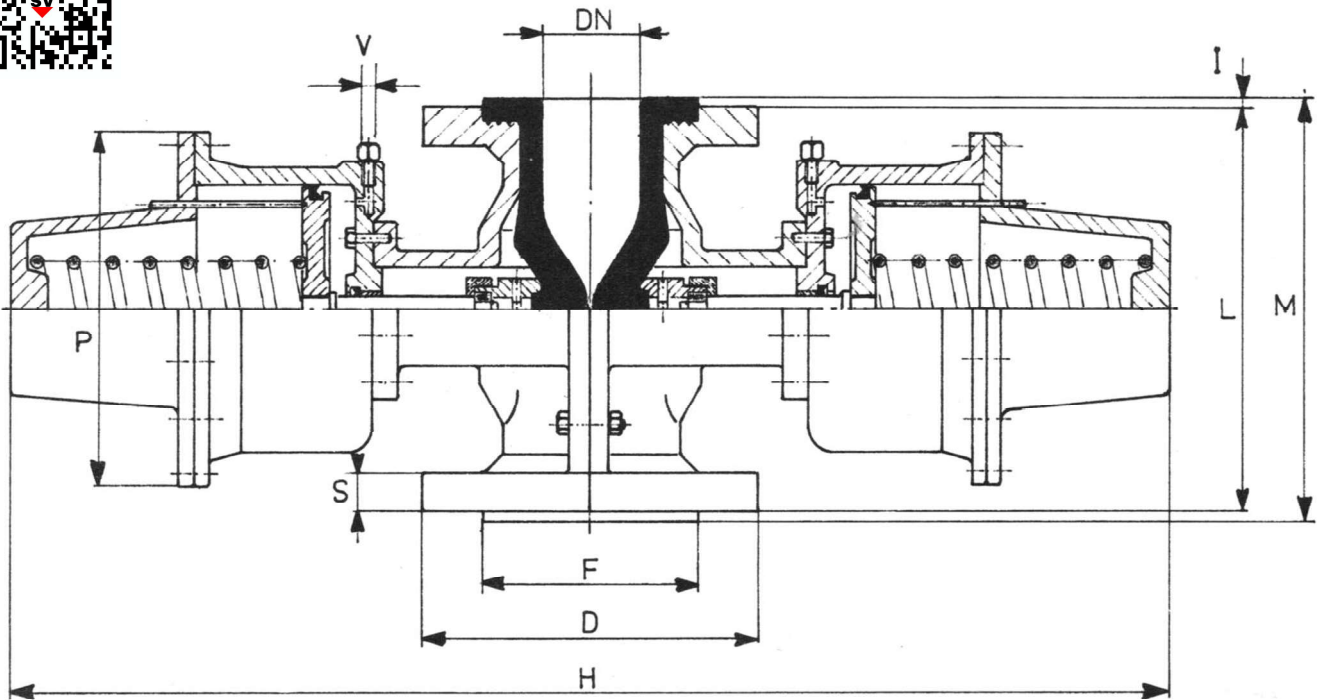
Construction features: as per types "SD" (TN 2014) and "SC" (TN 2015).

Ouverture et fermeture de la vanne par admission d'air comprimé dans le cylindre pneumatique. Avec volant de secours pour la manoeuvre manuelle.

Cylindre et piston: en alliage en aluminium.

Corps de la vanne: normalement en aluminium.

Caractéristiques constructives: comme pour les types "SD" (TN 2014) et "SC" (TN 2015).



CARATTERISTICHE E DIMENSIONI - SPECIFICATIONS AND DIMENSIONS - CARACTERISTIQUES ET DIMENSIONS

DN	D	F	H	I	L	M	P	S	V	Press. max. Bar	Pesi Weights - Poids Kg.	
80	200	140	675	10	250	270	165	22	1/4" G	3,5	28,000	
100	220	160	700	10	300	320	200	22	1/4" G	3,5	30,000	
125	250	210	870	10	300	320	245	24	1/4" G	2,5	47,000	
150	285	240	900	10	300	320	245	24	1/4" G	2	55,000	
200	340	295	1030	10	340	360	285	26	1/4" G	2	71,500	

Valvola equilibrata a doppio comando pneumatico. Valvola costantemente chiusa in posizione di riposo. Apertura mediante immissione di aria compressa nei cilindri pneumatici.

Cilindri e pistoni: in lega di alluminio.

Corpo: normalmente in alluminio.

Caratteristiche costruttive: come per il tipo "C" (TN 2015/B).

Balanced valve with double pneumatic actuator. Normally closed valve. Delivery of compressed air to the pneumatic cylinders opens the valve.

Cylinders and pistons: aluminum alloy.

Valve body: normally aluminum.

Construction features: as per type "C" (TN 2015/B).

Vanne équilibrée avec double commande pneumaticque. Vanne normalement fermée. Ouverture de la vanne par admission d'air comprimé dans les cylindres pneumaticques.

Cylindres et pistons: en alliage en aluminium.

Corps de la vanne: normalement en aluminium.

Caractéristiques constructives: comme pour le type "C" (TN 2015/B).

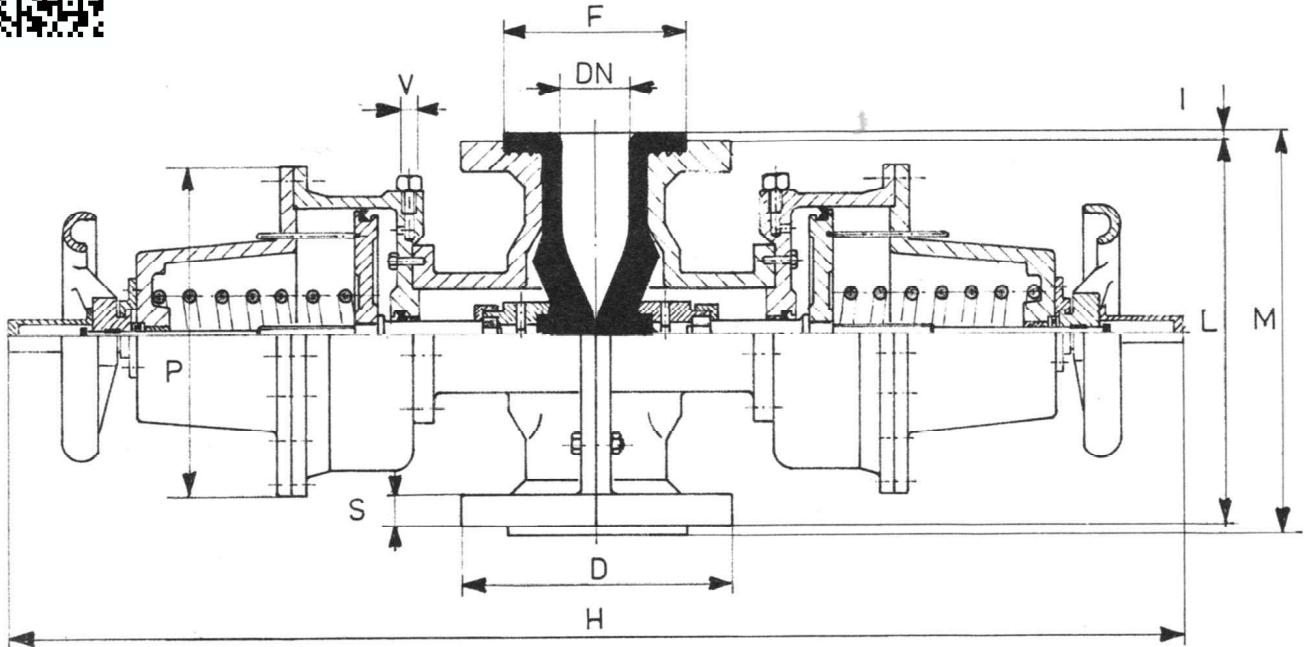


VALVOLE SIRSI - TIPO "PAV 2" - PRESSIONE APRE - CON VOLANTINI PER L'APERTURA MANUALE DI EMERGENZA

TYPE "PAV 2" PRESSURE OPENING SIRSI VALVES - WITH EMERGENCY HANDWHEELS

VANNES SIRSI - TYPE "POV 2" - PRESSION OUVRE - AVEC VOLANTS DE SECOURS

TN 3023



CARATTERISTICHE E DIMENSIONI - SPECIFICATIONS AND DIMENSIONS - CARACTERISTIQUES ET DIMENSIONS

DN	D	F	H	I	L	M	P	S	V	Press. max. Bar	Pesi Weights - Poids Kg.
80	200	140	900	10	250	270	165	22	1/4" G	3,5	30,000
100	220	160	920	10	300	320	200	22	1/4" G	3,5	32,000
125	250	210	1120	10	300	320	245	24	1/4" G	2,5	50,000
150	285	240	1200	10	300	320	245	24	1/4" G	2	58,000
200	340	295	1330	10	340	360	285	26	1/4" G	2	76,000



Valvola equilibrata a doppio comando pneumatico. Valvola costantemente chiusa in posizione di riposo. Apertura mediante immissione di aria compressa nei cilindri pneumatici. Dotata di volantini per l'apertura manuale di emergenza.

Cilindri e pistoni: in lega di alluminio.

Corpo: normalmente in alluminio.

Caratteristiche costruttive: come per il tipo "C" (TN 2015/B).

Balanced valve with double pneumatic actuator. Normally closed valve. Delivery of compressed air to the pneumatic cylinders opens the valve. With handwheels for emergency manual opening operation.

Cylinders and pistons: aluminum alloy.

Valve body: normally aluminum.

Construction features: as per type "C" (TN 2015/B).

Vanne équilibrée avec double commande pneumatique. Vanne normalement fermée. Ouverture de la vanne par admission d'air comprimé dans les cylindres pneumatiques. Avec volant de secours pour l'ouverture manuelle.

Cylindres et pistons: en alliage en aluminium.

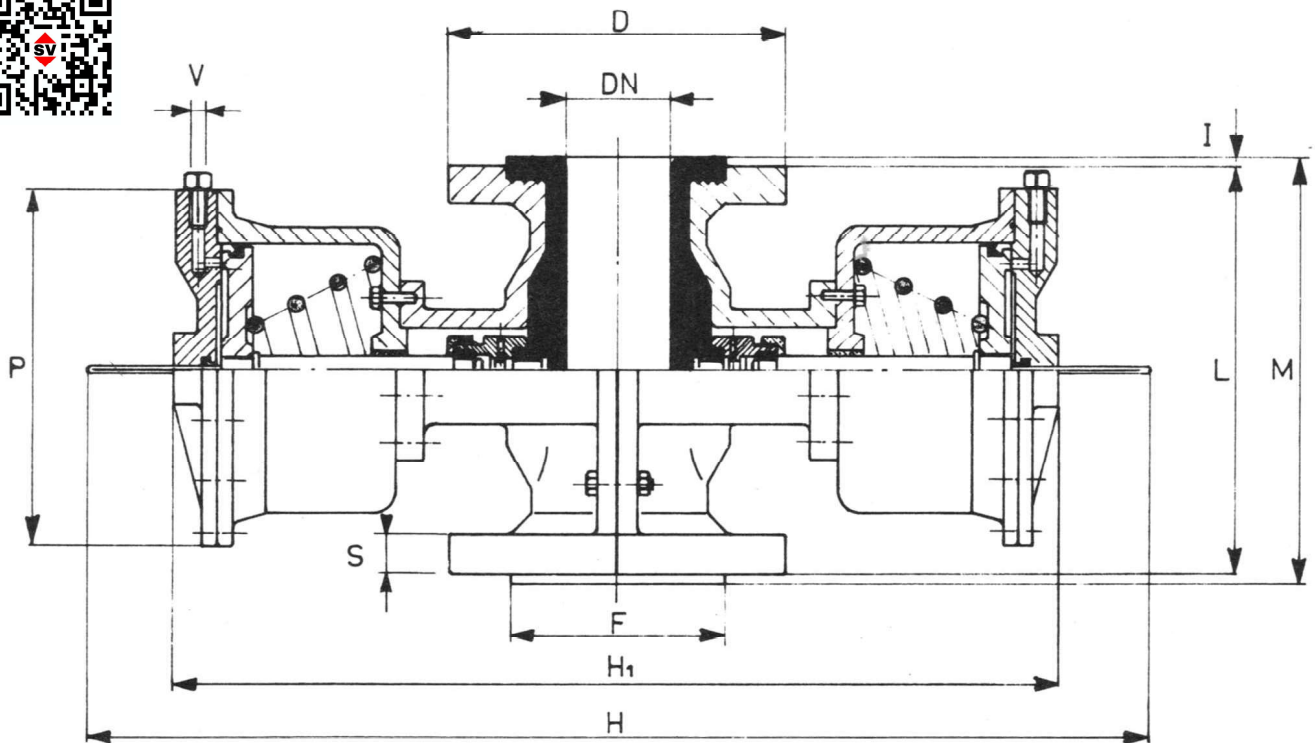
Corps de la vanne: normalement en aluminium.

Caractéristiques constructives: comme pour le type "C" (TN 2015/B).



VALVOLE SIRSI - TIPO "PC 2" - PRESSIONE CHIUDE
 TYPE "PC 2" PRESSURE CLOSING SIRSI VALVES
 VANNES SIRSI - TYPE "PC 2" - PRESSION FERME

TN 3021



CARATTERISTICHE E DIMENSIONI - SPECIFICATIONS AND DIMENSIONS - CARACTERISTIQUES ET DIMENSIONS

DN	D	F	H	H ₁	I	L	M	P	S	V	Press. max. Bar	Pesi Weights - Poids Kg.
80	200	140	750	590	10	250	270	165	22	1/4" G	4	23,000
100	220	160	780	615	10	300	320	200	22	1/4" G	4	26,000
125	250	210	830	730	10	300	320	245	24	1/4" G	3	43,000
150	285	240	865	760	10	300	320	245	24	1/4" G	3	51,000
200	340	295	1050	860	10	340	360	285	26	1/4" G	2	68,500



Valvola equilibrata a doppio comando pneumatico. Valvola costantemente aperta in posizione di riposo. Chiusura mediante immissione di aria compressa nei cilindri pneumatici.

Cilindri e pistoni: in lega di alluminio.

Corpo: normalmente in alluminio.

Caratteristiche costruttive: come per il tipo "C" (TN 2015/B).

Balanced valve with double pneumatic actuator. Normally opened valve. Delivery of compressed air to the pneumatic cylinders closes the valve.

Cylinders and pistons: aluminum alloy.

Valve body: normally aluminum.

Construction features: as per type "C" (TN 2015/B).

Vanne équilibrée avec double commande pneumatique. Vanne normalement ouverte. Fermeture de la vanne par admission d'air comprimé dans les cylindres pneumatiques.

Cylindres et pistons: en alliage en aluminium.

Corps de la vanne: normalement en aluminium.

Caractéristiques constructives: comme pour le type "C" (TN 2015/B).

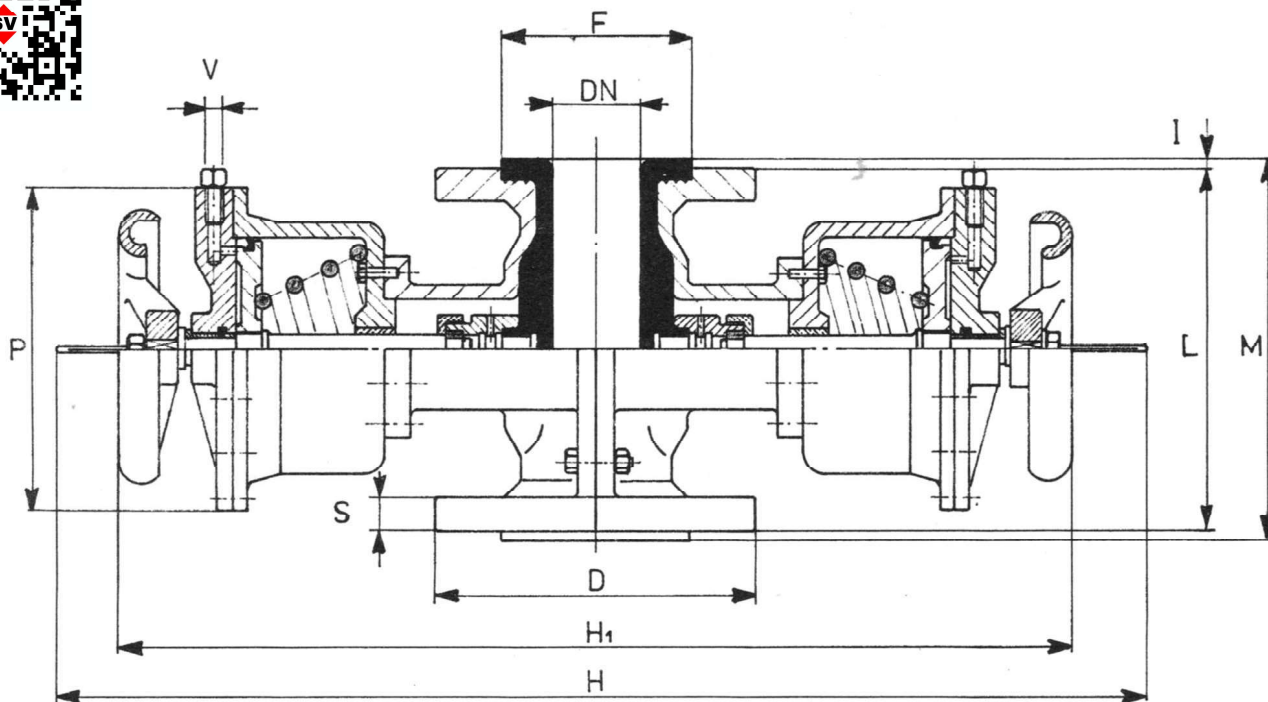


VALVOLE SIRSI - TIPO "PCV 2" - PRESSIONE CHIUDE - CON VOLANTINI PER LA CHIUSURA MANUALE DI EMERGENZA

TYPE "PCV 2" PRESSURE CLOSING SIRSI VALVES - WITH EMERGENCY HANDWHEELS

VANNES SIRSI - TYPE "PFV 2" - PRESSION FERME - AVEC VOLANTS DE SECOURS

TN 3020



CARATTERISTICHE E DIMENSIONI - SPECIFICATIONS AND DIMENSIONS - CARACTERISTIQUES ET DIMENSIONS

DN	D	F	H	H ₁	I	L	M	P	S	V	Press. max. Bar	Pesi Weights - Poids Kg.	
80	200	140	760	630	10	250	270	165	22	1/4" G	4	25,000	
100	220	160	780	650	10	300	320	200	22	1/4" G	4	27,500	
125	250	210	920	780	10	300	320	245	24	1/4" G	3	45,000	
150	285	240	940	800	10	300	320	245	24	1/4" G	3	52,000	
200	340	295	1120	920	10	340	360	285	26	1/4" G	2	70,000	

Valvola equilibrata a doppio comando pneumatico. Valvola costantemente aperta in posizione di riposo. Chiusura mediante immissione di aria compressa nei cilindri pneumatici. Dotata di volantini per la chiusura manuale di emergenza.

Cilindri e pistoni: in lega di alluminio.

Corpo: normalmente in alluminio.

Caratteristiche costruttive: come per il tipo "C" (TN 2015/B).

Balanced valve with double pneumatic actuator. Normally opened valve. Delivery of compressed air to the pneumatic cylinders closes the valve. With handwheels for emergency manual closing operation.

Cylinders and pistons: aluminum alloy.

Valve body: normally aluminum.

Construction features: as per type "C" (TN 2015/B).

Vanne équilibrée avec double commande pneumaticque. Vanne normalement ouverte. Fermeture de la vanne par admission d'air comprimé dans les cylindres pneumatiques. Avec volant de secours pour la fermeture manuelle.

Cylindres et pistons: en alliage en aluminium.

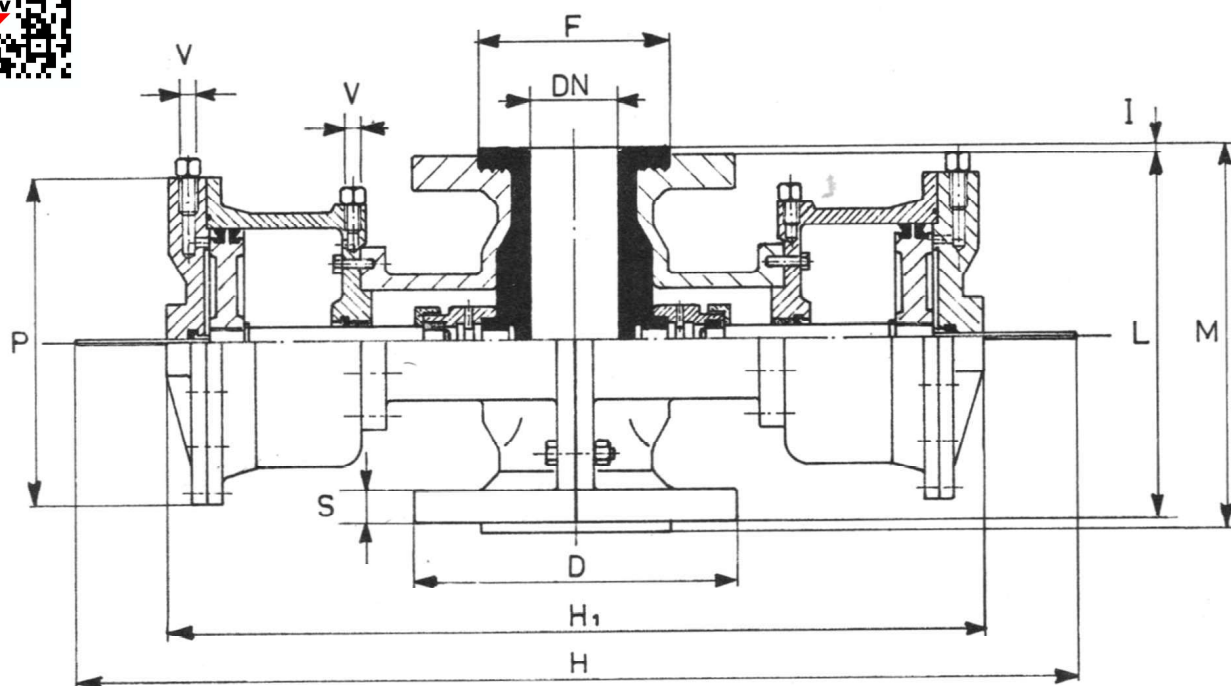
Corps de la vanne: normalement en aluminium.

Caractéristiques constructives: comme pour le type "C" (TN 2015/B).



VALVOLE SIRSI - TIPO "PAC 2" PRESSIONE
 APRE-CHIUDE
 TYPE "PAC 2" PRESSURE OPENING-CLOSING
 SIRSI VALVES
 VANNES SIRSI - TYPE "POF 2" PRESSION
 OUVRE-FERME

TN 3022/D



CARATTERISTICHE E DIMENSIONI - SPECIFICATIONS AND DIMENSIONS - CARACTERISTIQUES ET DIMENSIONS

DN	D	F	H	H ₁	I	L	M	P	S	V	Press. max.	Pesi Weights - Poids Kg.	
80	200	140	750	590	10	250	270	165	22	1/4" G	3,5	22,300	
100	220	160	780	615	10	300	320	200	22	1/4" G	3,5	25,000	
125	250	210	850	730	10	300	320	245	24	1/4" G	2,5	41,500	
150	285	240	875	760	10	300	320	245	24	1/4" G	2	50,000	
200	340	295	1050	860	10	340	360	285	26	1/4" G	2	68,000	

Valvola equilibrata a doppio comando pneumatico. Apertura e chiusura mediante immissione di aria compressa nei cilindri pneumatici.

Cilindri e pistoni: in lega di alluminio.

Corpo: normalmente in alluminio.

Caratteristiche costruttive: come per il tipo "C" (TN 2015/B).

Balanced valve with double pneumatic actuator. Delivery of compressed air to the pneumatic cylinders opens and closes the valve.

Cylinders and pistons: aluminum alloy.

Valve body: normally aluminum.

Construction features: as per type "C" (TN 2015/B).

Vanne équilibrée avec double commande pneumaticque. Ouverture et fermeture de la vanne par admission d'air comprimé dans les cylindres pneumatiques.

Cylindres et pistons: en alliage en aluminium.

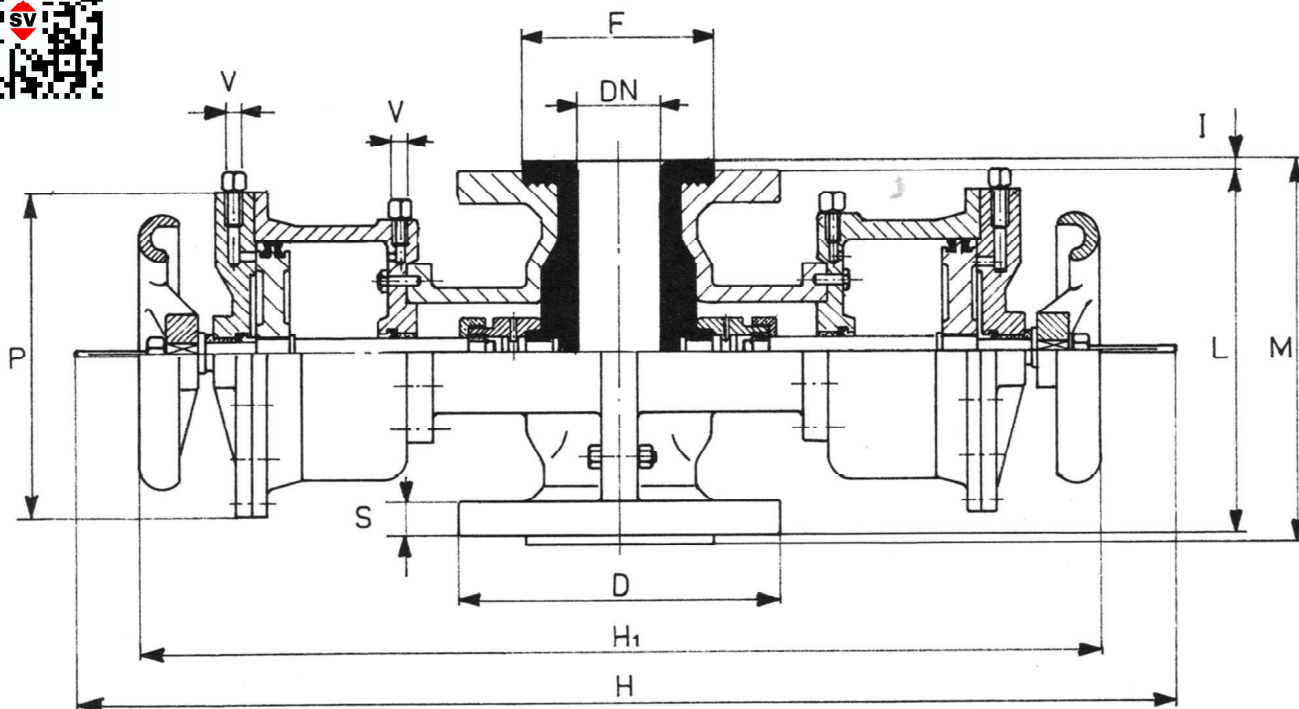
Corps de la vanne: normalement en aluminium.

Caractéristiques constructives: comme pour le type "C" (TN 2015/B).



VALVOLE SIRSI - TIPO "PACV 2" PRESSIONE
 APRE-CHIUDE CON VOLANTINI DI EMERGENZA
 TYPE "PACV 2" PRESSURE OPENING-CLOSING
 SIRSI VALVES WITH EMERGENCY HANDWHEELS
 VANNES SIRSI - TYPE "POFV 2" PRESSION
 OUVRE-FERME AVEC VOLANTS DE SECOURS

TN 3023/D



CARATTERISTICHE E DIMENSIONI - SPECIFICATIONS AND DIMENSIONS - CARACTERISTIQUES ET DIMENSIONS

DN	D	F	H	H ₁	I	L	M	P	S	V	Press. max. Bar	Pesi Weights - Poids Kg.	
80	200	140	760	630	10	250	270	165	22	1/4" G	3,5	25,000	
100	220	160	780	650	10	300	320	200	22	1/4" G	3,5	27,500	
125	250	210	920	780	10	300	320	245	24	1/4" G	2,5	45,000	
150	285	240	940	800	10	300	320	245	24	1/4" G	2	52,000	
200	340	295	1120	920	10	340	360	285	26	1/4" G	2	70,000	

Valvola equilibrata a doppio comando pneumatico. Apertura e chiusura mediante immissione di aria compressa nei cilindri pneumatici. Dotata di volantini per la manovra manuale di emergenza.

Cilindri e pistoni: in lega di alluminio.

Corpo: normalmente in alluminio.

Caratteristiche costruttive: come per il tipo "C" (TN 2015/B).

Balanced valve with double pneumatic actuator. Delivery of compressed air to the pneumatic cylinders opens and closes the valve. With handwheels for emergency manual operation.

Cylinders and pistons: aluminum alloy.

Valve body: normally aluminum.

Construction features: as per type "C" (TN 2015/B).

Vanne équilibrée avec double commande pneumatique. Ouverture et fermeture de la vanne par admission d'air comprimé dans les cylindres pneumatiques. Avec volant de secours pour la manoeuvre manuelle.

Cylindres et pistons: en alliage en aluminium.

Corps de la vanne: normalement en aluminium.

Caractéristiques constructives: comme pour le type "C" (TN 2015/B).

SV SIRSI VALVES

VALVOLE A MEMBRANA FLAV FLUSSO AVVIATO

La valvola FLAV Sirsi, manuale o pneumatica, viene impiegata per intercettare fluidi aggressivi, fluidi difficili e fluidi sensibili che non ammettono premistoppa e non devono entrare in contatto con le parti meccaniche. La loro chiusura è affidata a una membrana elastica che viene spinta sino al corpo inferiore ottenendo una tenuta perfetta.

La membrana viene opportunamente scelta secondo i vari impieghi.

È disponibile in vari tipi di elastomeri: gomma Para, Para alimentare, Neoprene, EPDM, MNBR, Hypalon, Viton, Silicone, Butile, PTFE e Teflon.

I corpi sono disponibili in acciaio, ghisa, alluminio e con rivestimenti in gomma dura, teflon, ebanite.

Le valvole FLAV possono operare ad elevate temperature, pressione e sottovuoto.



SIRSI FLAV DIAPHRAGM VALVES SELF-STARTING FLUX

Manual or pneumatic Sirsi FLAV valves are used to intercept aggressive, difficult or sensitive fluids where a STAFFING BOX is not admissible and where contact with mechanical parts is not permitted.

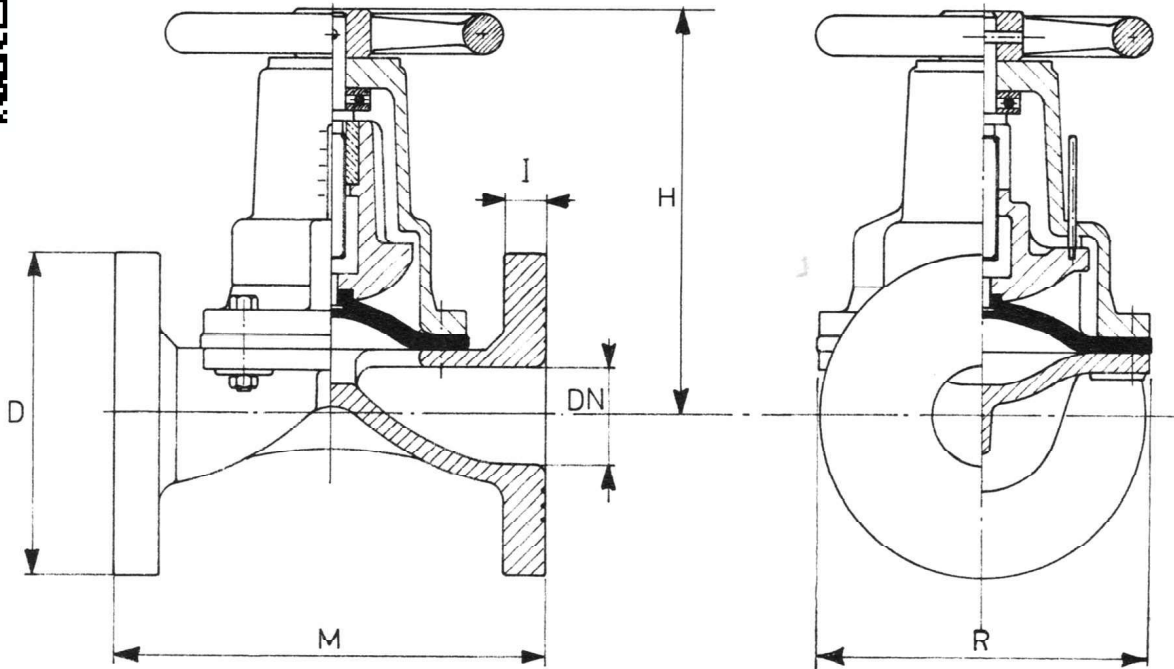
The closing apparatus is controlled by an elastic diaphragm that is pushed into the lower body to obtain a perfect seal.

FLAV diaphragm valves have a wide variety of uses and are available in natural Para rubber, pure Para rubber for the food industry, Neoprene, EPDM, MNBR, Hypalon, Viton, Silicon, Butyl and Teflon.

Valve bodies are available in stainless steel, cast iron, aluminium and with hard rubber, Teflon or Ebonite coatings.

FLAV valves can be operated under high temperature, pressure or vacuum conditions.





CARATTERISTICHE E DIMENSIONI - SPECIFICATIONS AND DIMENSIONS - CARACTERISTIQUES ET DIMENSIONS

DN	D	H	I	M	R	Press. max. Bar	Pesi Weights - Poids Kg.
15	95	80	14	108	70	10	1,900
20	105	80	16	117	70	10	2,000
25	115	135	16	127	100	8	4,600
32	140	140	18	146	130	8	5,500
40	150	175	18	159	145	8	9,100
50	165	185	20	190	170	7	10,000
65	185	200	20	216	180	7	14,400
80	200	225	22	254	210	7	20,000
100	220	285	22	305	235	6	28,000
125	250	390	24	356	270	4	53,000
150	285	400	24	406	330	4	62,000
200	340	550	28	521	420	3	130,000
250	395	670	32	635	480	3	230,000
300	445	700	32	749	580	3	272,000
350	505	700	32	749	580	3	309,000



Dimensioni flange: secondo norme UNI 2223 - PN 10-16 o norme DIN 2532 - ND 10. A richiesta secondo norme ANSI 125 o 150, norme B.S. o altre norme.

Scartamento: secondo norme BS 5156 le valvole ebanitate aggiungere alla quota "M" 8 mm. dal Ø 15 al Ø 100 e 10 mm. dal Ø 125 al Ø 350.

Corpo: in ghisa o acciaio al C. con o senza rivestimento di ebanite, gomma, Hypalon. In acciaio inossidabile tipo AISI 304-316.

Membrana: in elastomeri sintetici o in PTFE.

Flange dimensions: to DIN 2532 - ND 10 or UNI 2223 - PN 10-16 standards. Optionally to ANSI 125 or 150. to B.S. or other standards.

Length over flanges: to BS 5156 standards rubber-lined valves add to dimension "M" 8 mm. from Ø 15 to Ø 100 and 10 mm. from Ø 125 to Ø 350.

Valve body: cast iron, or carbon steel with or without hard rubber - soft rubber - hypalon - lining. Stainless steel type AISI 304-316.

Diaphragm: synthetic elastomers or PTFE.

Dimensions des brides: suivant les normes DIN 2532 - ND 10 ou UNI 2223 - PN 10-16. Sur demande, suivant les normes ANSI 125 ou 150, les normes B.S. ou autres normes.

Encombrement: suivant normes BS 5156 les vannes avec revêtement d'ébonite augmenter le côté "M" de 8 mm. pour les Ø 15 à 100 et de 10 mm. pour les Ø 125 à 350.

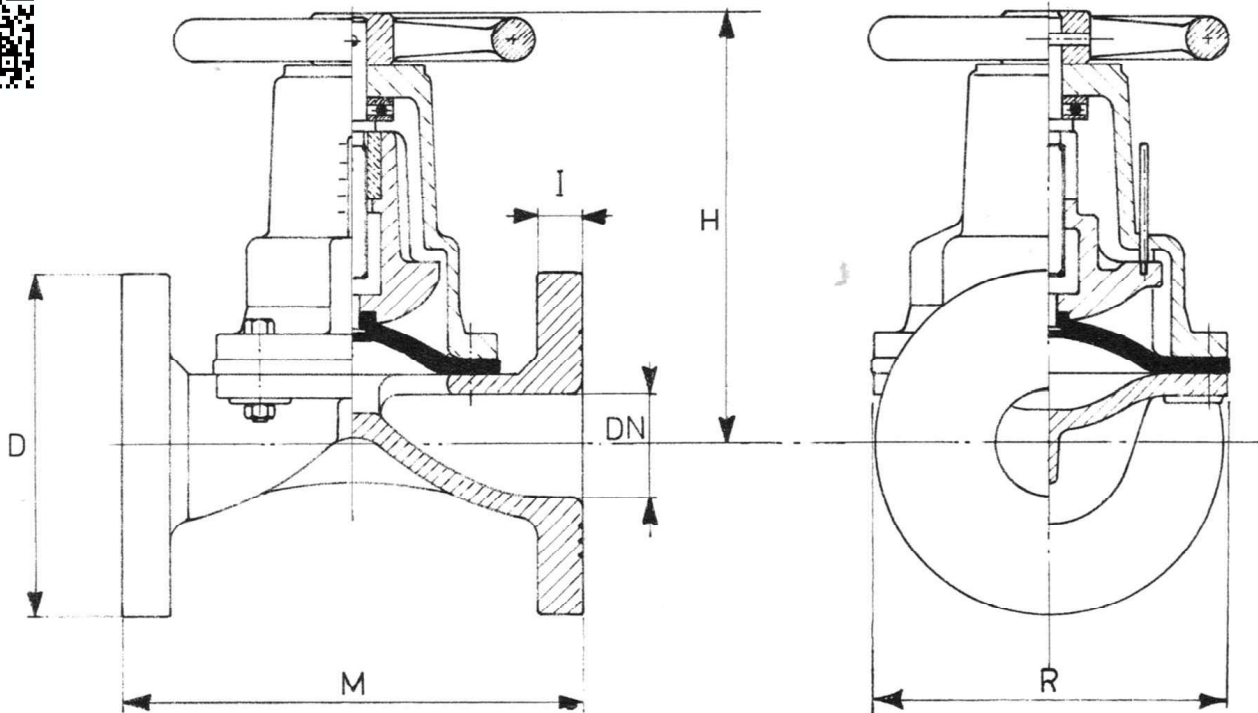
Corps de la vanne: en fonte ou acier au C. avec ou sans revêtement d'ébonite, caoutchouc, hypalon. En acier inoxydable type AISI 304-316.

Membrane: en élastomères synthétiques ou en PTFE.



VALVOLE SIRSI - TIPO "FLAV-DIN" A MEMBRANA
 TYPE "FLAV-DIN" SIRSI DIAPHRAGM VALVES
 VANNES SIRSI A MEMBRANE - TYPE "FLAV-DIN"

TN 2028/A



CARATTERISTICHE E DIMENSIONI - SPECIFICATIONS AND DIMENSIONS - CARACTERISTIQUES ET DIMENSIONS

DN	D	H	I	M	R	Press. max. Bar	Pesi Weights - Poids Kg.
15	95	80	14	130	70	10	2,300
20	105	80	16	150	70	10	2,500
25	115	135	16	160	100	8	5,400
32	140	140	18	180	130	8	7,000
40	150	175	18	200	145	7	11,000
50	165	185	20	230	170	7	13,500
65	185	200	20	290	180	7	17,000
80	200	225	22	310	210	7	26,000
100	220	285	22	350	235	6	35,500
125	250	390	24	400	270	4	60,000
150	285	400	24	480	330	4	70,000
200	340	550	28	600	420	3	143,000
250	395	670	32	730	480	3	230,000
300	445	700	32	850	580	3	330,000
350	505	700	32	980	580	3	345,000



Dimensioni flange: secondo norme UNI 2223 - PN 10-16 o norme DIN 2532 - ND 10. A richiesta secondo norme ANSI 125 o 150, norme B.S. o altre norme.

Scartamento: secondo norme DIN 3202 F1.

Corpo: in ghisa o acciaio al C. con o senza rivestimento di ebanite, gomma, hypalon. In acciaio inossidabile tipo AISI 304-316.

Membrana: in elastomeri sintetici o in PTFE.

Flange dimensions: to DIN 2532 - ND 10 or UNI 2223 - PN 10-16 standards. Optionally to ANSI 125 or 150, to B.S. or other standards.

Length over flanges: to DIN 3202 F1 standards.

Valve body: cast iron, or carbon steel with or without hard rubber - soft rubber - hypalon - lining. Stainless steel type AISI 304-316.

Diaphragm: synthetic elastomers or PTFE.

Dimensions des brides: suivant les normes DIN 2532 - ND 10 ou UNI 2223 - PN 10-16. Sur demande, suivant les normes ANSI 125 ou 150, les normes B.S. ou autres normes.

Encombrement: suivant normes DIN 3202 F1.

Corps de la vanne: en fonte ou acier au C. avec ou sans revêtement d'ébonite, caoutchouc, hypalon. En acier inoxydable type AISI 304-316.

Membrane: en élastomères synthétiques ou en PTFE.

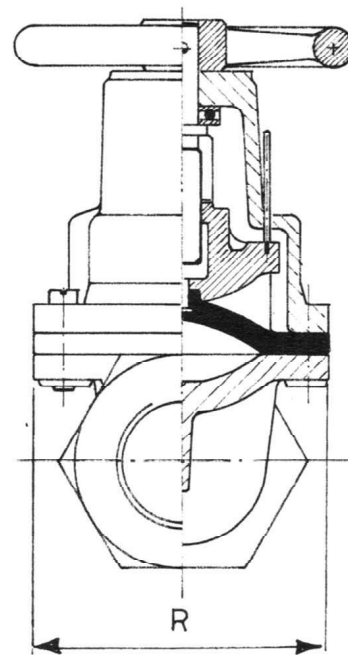
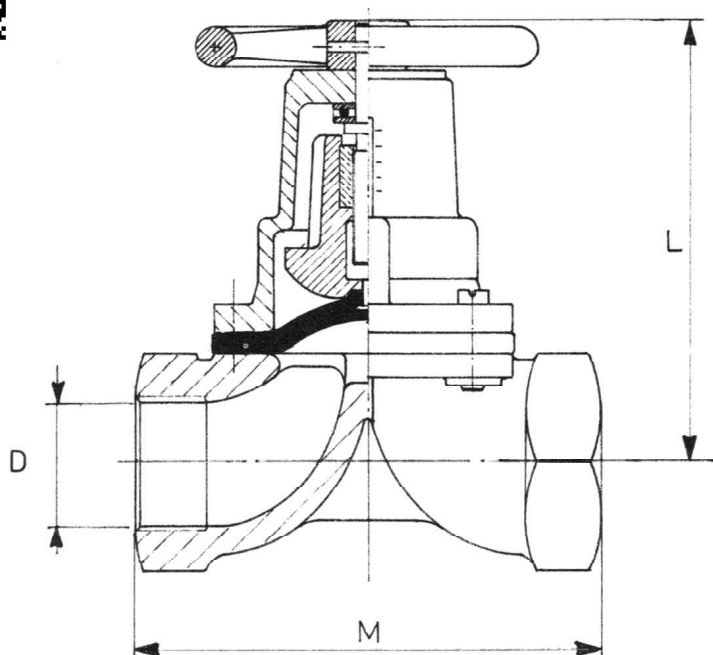


VALVOLE SIRSI - TIPO "FLAV-M" - A MEMBRANA
CON ATTACCHI FILETTATI

TYPE "FLAV-M" SIRSI DIAPHRAGM VALVES -
SCREWED ENDS

VANNES SIRSI A MEMBRANE - TYPE "FLAV-M"
EXTREMITÉS TARAUDÉES

TN 2028/B



CARATTERISTICHE E DIMENSIONI - SPECIFICATIONS AND DIMENSIONS - CARACTERISTIQUES ET DIMENSIONS

DN	D	L	M	R	Press. max. Bar	Pesi Weights - Poids Kg.
10/12	1/4" NPT	80	87	70	10	0,400
15	1/2" NPT	80	87	70	10	0,800
20	3/4" NPT	80	87	70	10	1,100
25	1" NPT	135	110	100	8	3,300
32	1 1/4" NPT	140	155	130	8	4,200
40	1 1/2" NPT	175	160	145	7	6,500
50	2" NPT	185	190	170	7	8,000



Azionamento mediante volanteino.

Filettatura: attacchi filettati femmina con filettatura tipo GAS, API, BSP o altri tipi.

Corpo: in ghisa grezza, alluminio o in altre leghe metalliche.

Membrana: in elastomeri sintetici o in PTFE.

Handwheel operated valves.

Screwed ends: to GAS, A.P.I., B.S.P. and other standards.

Valve body: cast iron, aluminum, or other metallic alloys.

Diaphragm: synthetic elastomers or PTFE.

Vannes actionnées par volant.

Taradage: extrémités taraudées avec filetage type Gaz, A.P.I., B.S.P. et autres.

Corps de la vanne: en fonte, aluminium ou autres alliages métalliques.

Membrane: en élastomères synthétiques ou en PTFE.

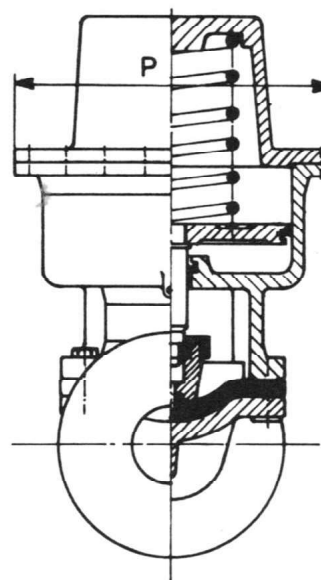
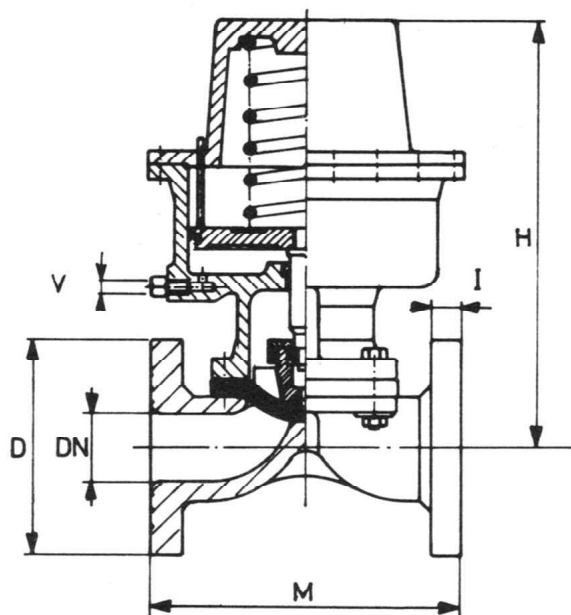


VALVOLE SIRSI - TIPO "FLAV-P.A." A FLUSSO
AVVIATO PRESSIONE APRE

TYPE "FLAV-P.A." PRESSURE OPENING
SIRSI VALVES

VANNES SIRSI - TYPE "FLAV-P.O." PRESSION
OUVRE

TN 2030



CARATTERISTICHE E DIMENSIONI - SPECIFICATIONS AND DIMENSIONS - CARACTERISTIQUES ET DIMENSIONS

DN	D	H	I	M	P	V	Press. max. Bar	Pesi Weights - Poids Kg.
15	95	240	14	108	150	1/4" G	5	4,000
20	105	240	16	117	150	1/4" G	5	4,500
25	115	265	16	127	150	1/4" G	5	6,800
32	140	270	18	146	150	1/4" G	5	7,900
40	150	385	18	164	200	1/4" G	4	13,200
50	165	395	20	190	200	1/4" G	4	16,000
65	185	405	20	216	200	1/4" G	4	20,500
80	200	470	22	254	285	1/4" G	4	36,000
100	220	490	22	305	285	1/4" G	4	43,500
125	250	845	24	356	372	1/4" G	4	86,500
150	285	885	24	406	372	1/4" G	3	97,500
200	340	1080	28	520	450	1/4" G	3	138,000
250	395	1170	32	635	450	1/4" G	3	210,000
300	445	1300	32	749	450	1/4" G	3	248,000



Valvola costantemente chiusa in posizione di riposo. Apertura mediante immissione di aria compressa nel cilindro pneumatico.

Cilindro e pistone: in lega di alluminio.

Caratteristiche costruttive: identiche a quelle del tipo "FLAV" normale (TN 2028).

N.B.: le valvole FLAV-PA vengono anche fornite con scartamenti DIN (cfr. TN 2028/A), con attacchi filettati (cfr. TN 2028/B) e con corpo a squadra (cfr. TN 2028/C).

Normally closed valve. Delivery of compressed air to the pneumatic cylinder opens the valve.

Cylinder and piston: aluminum alloy.

Construction features: as per normal type "FLAV" (TN 2028).

N.B.: type "FLAV-PA" valves are also supplied with DIN length over flanges (see TN 2028/A), with screwed ends (see TN 2028/B) and with angle body (see TN 2028/C).

Vanne normalmente fermée. Ouverture de la vanne par admission d'air comprimé dans le cylindre pneumatique.

Cylindre et piston: en alliage en aluminium.

Caractéristiques constructives: identiques à celles du type "FLAV" normal (TN 2028).

N.B.: les vannes FLAV-PO sont également fournies avec encombrements DIN (cfr. TN 2028/A) avec extrémités taraudées (cfr. TN 2028/B) et avec corps d'équerre (cfr. TN 2028/C).

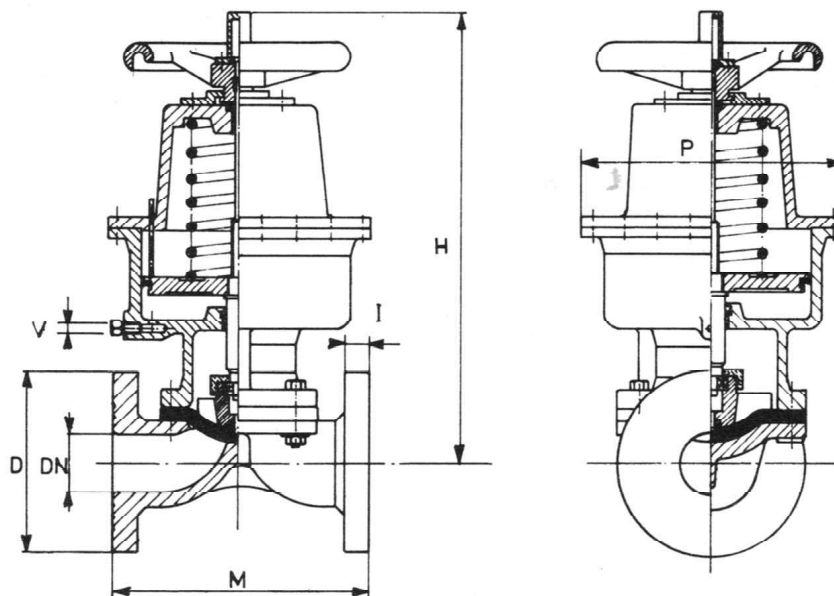


VALVOLE SIRSI - TIPO "FLAV-P.A.V." A FLUSSO AVVIATO - PRESSIONE APRE CON VOLANTINO DI EMERGENZA

TYPE "FLAV-P.A.V." PRESSURE OPENING SIRSI VALVES WITH EMERGENCY HANDWHEEL

VANNES SIRSI - TYPE "FLAV-P.O.V." PRESSION OUVRE AVEC VOLANT DE SECOURS

TN 2029



CARATTERISTICHE E DIMENSIONI - SPECIFICATIONS AND DIMENSIONS - CARACTERISTIQUES ET DIMENSIONS

DN	D	H	I	M	P	V	Press. max. Bar	Pesi Weights - Poids Kg.
15	95	300	14	108	150	1/4" G	5	4,200
20	105	300	16	117	150	1/4" G	5	4,700
25	115	330	16	127	150	1/4" G	5	7,000
32	140	335	18	146	150	1/4" G	5	8,200
40	150	460	18	164	200	1/4" G	4	14,000
50	165	470	20	190	200	1/4" G	4	15,800
65	185	500	20	216	200	1/4" G	4	22,000
80	200	600	22	254	285	1/4" G	4	39,000
100	220	620	22	305	285	1/4" G	4	47,000
125	250	1025	24	356	372	1/4" G	4	91,000
150	285	1065	24	406	372	1/4" G	3	100,000
200	340	1310	28	520	450	1/4" G	3	142,000
250	395	1425	32	635	450	1/4" G	3	220,000
300	445	-	32	749	450	1/4" G	3	255,000



Valvola costantemente chiusa in posizione di riposo. Apertura mediante immissione di aria compressa nel cilindro pneumatico. Munita di volantino per apertura manuale di emergenza. Su richiesta si fornisce con limitatore di apertura.

Cilindro e pistone: in lega di alluminio.

Caratteristiche costruttive: identiche a quelle del tipo "FLAV" normale (TN 2028).

N.B.: le valvole FLAV-PAV vengono anche fornite con scartamenti DIN (cfr. TN 2028/A), con attacchi filettati (cfr. TN 2028/B) e con corpo a squadra (cfr. TN 2028/C).

Normally closed valve. Delivery of compressed air to the pneumatic cylinder opens the valve. With handwheel for emergency manual opening operation. Optionally with opening limiting device.

Cylinder and piston: aluminum alloy.

Construction features: as per normal type "FLAV" (TN 2028).

N.B.: type "FLAV-PAV" valves are also supplied with DIN length over flanges (see TN 2028/A), with screwed ends (see TN 2028/B) and with angle body (see TN 2028/C).

Vanne normalmente fermée. Ouverture de la vanne par admission d'air comprimé dans le cylindre pneumatique. Avec volant de secours pour l'ouverture manuelle. Sur demande, avec limiteur d'ouverture.

Cylindre et piston: en alliage en aluminium.

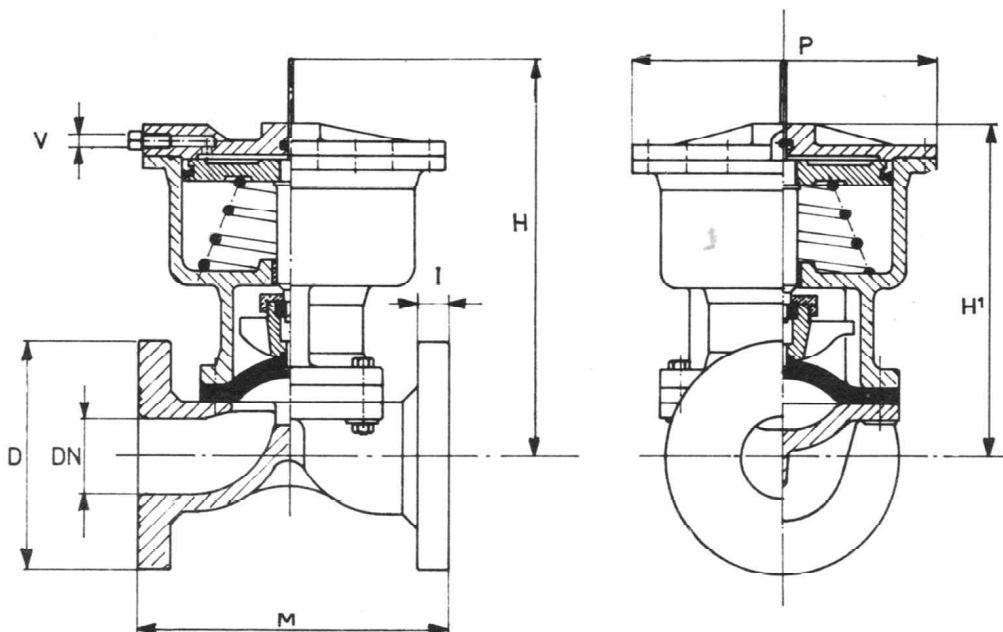
Caractéristiques constructives: identiques à celles du type "FLAV" normal (TN 2028).

N.B.: Les vannes FLAV-POV sont également fournies avec encombrements DIN (cfr. TN 2028/A), avec extrémités taraudées (cfr. TN 2028/B) et avec corps d'équerre (cfr. TN 2028/C).



VALVOLE SIRSI - TIPO "FLAV-P.C." A FLUSSO
AVVIATO PRESSIONE CHIUDE
TYPE "FLAV-P.C." PRESSURE CLOSING
SIRSI VALVES
VANNES SIRSI - TYPE "FLAV-P.F." - PRESSION
FERME

TN 2032



CARATTERISTICHE E DIMENSIONI - SPECIFICATIONS AND DIMENSIONS - CARACTERISTIQUES ET DIMENSIONS

DN	D	H	I	L ₁	M	P	V	Press. max. Bar	Pesi Weights - Poids Kg.
15	95	265	14	180	108	150	1/4" G	10	3,800
20	105	265	16	180	117	150	1/4" G	10	4,000
25	115	290	16	205	127	150	1/4" G	8	6,700
32	140	295	18	210	146	150	1/4" G	8	8,100
40	150	410	18	275	164	200	1/4" G	7	12,500
50	165	410	20	285	190	200	1/4" G	7	15,300
65	185	430	20	295	216	200	1/4" G	7	19,600
80	200	460	22	315	254	285	1/4" G	7	34,500
100	220	470	22	335	305	285	1/4" G	6	43,000
125	250	710	24	530	356	372	1/4" G	4	75,000
150	285	750	24	570	406	372	1/4" G	4	82,000
200	340	855	28	650	520	450	1/4" G	3	128,000
250	395	1070	32	720	635	450	1/4" G	3	202,500
300	445	1300	32	1100	749	450	1/4" G	3	237,500



Valvola costantemente aperta in posizione di riposo. Chiusura mediante immissione di aria compressa nel cilindro pneumatico.

Cilindro e pistone: in lega di alluminio.

Caratteristiche costruttive: identiche a quelle del tipo "FLAV" normale (TN 2028).

N.B.: le valvole "FLAV-PC" vengono anche fornite con scartamenti DIN (cfr. TN 2028/A), con attacchi filettati (cfr. TN 2028/B) e con corpo a squadra (cfr. TN 2028/C).

Normally open valve. Delivery of compressed air to the pneumatic cylinder closes the valve.

Cylinder and piston: aluminum alloy.

Construction features: as per normal type "FLAV" (TN 2028).

N.B.: type "FLAV-PC" valves are also supplied with DIN length over flanges (see TN 2028/A) with screwed ends (see TN 2028/B) and with angle body (see TN 2028/C).

Vanne normalmente ouverte. Fermeture de la vanne par admission d'air comprimé dans le cylindre pneumatique.

Cylindre et piston: en alliage en aluminium.

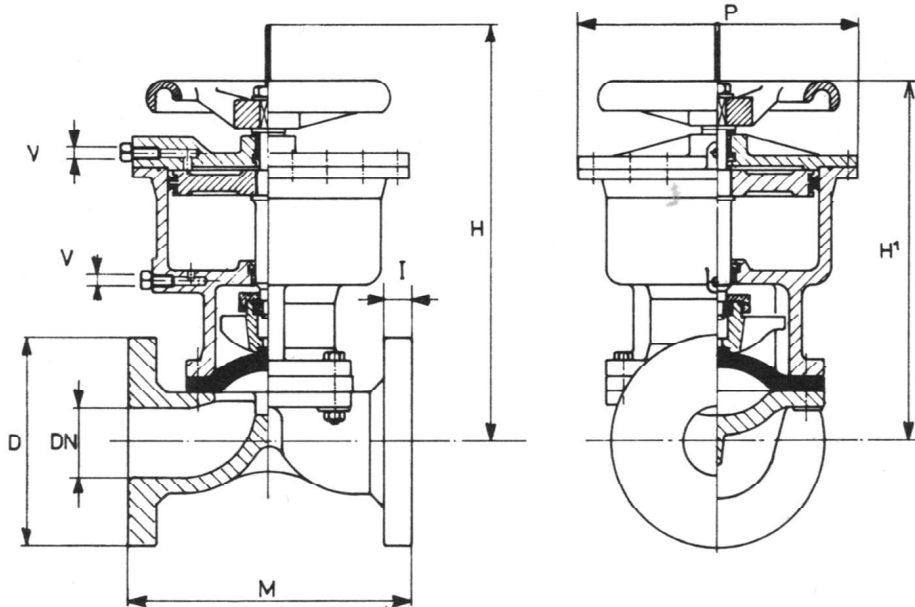
Caractéristiques constructives: identiques à celles du type "FLAV" normal (TN 2028).

N.B.: les vannes "FLAV-PF" sont également fournies avec encombrements DIN (cfr. TN 2028/A) avec extrémités taraudées (cfr. TN 2028/B) et avec corps d'équerre (cfr. TN 2028/C).



VALVOLE SIRSI - TIPO "FLAV-PACV" - PRESSIONE CHIUDE-APRE CON VOLANTINO DI EMERGENZA
 TYPE "FLAV-PACV" PRESSURE CLOSING AND OPENING VALVES WITH EMERGENCY HANDWHEEL
 VANNES SIRSI - TYPE "FLAV-POFV" - PRESSION FERME-OUVRE AVEC VOLANT DE SECOURS

TN 2031/D



CARATTERISTICHE E DIMENSIONI - SPECIFICATIONS AND DIMENSIONS - CARACTERISTIQUES ET DIMENSIONS

DN	D	H	H ₁	I	M	P	V	Press. max. Bar	Pesi Weights - Poids Kg.
15	95	265	240	14	108	150	1/4" G	5	3,800
20	105	265	240	16	117	150	1/4" G	5	4,000
25	115	290	260	16	127	150	1/4" G	5	6,500
32	140	295	260	18	146	150	1/4" G	5	8,000
40	150	410	330	18	164	200	1/4" G	4	12,000
50	165	410	330	20	190	200	1/4" G	4	16,500
65	185	430	350	20	216	200	1/4" G	4	21,500
80	200	460	380	22	254	285	1/4" G	4	35,000
100	220	470	390	22	305	285	1/4" G	4	44,000
125	250	710	600	24	356	372	1/4" G	4	75,000
150	285	750	630	24	406	372	1/4" G	3	85,000
200	340	855	725	28	520	450	1/4" G	3	130,000
250	395	1070	950	32	635	450	1/4" G	3	211,500
300	445	1300	1150	32	749	450	1/4" G	3	240,000



Chiusura e apertura della valvola mediante immissione di aria compressa nei cilindri pneumatici. Munita di volantino per la manovra manuale di emergenza.

Cilindri e pistoni: in lega di alluminio.

Caratteristiche costruttive: identiche a quelle del tipo "FLAV" normale (TN 2028).

N.B.: le valvole FLAV-PACV vengono anche fornite con scartamenti DIN (cfr. TN 2028/A), con attacchi filettati (cfr. TN 2028/B) e con corpo a squadra (cfr. TN 2028/C).

Delivery of compressed air to the pneumatic cylinders closes and opens the valve. With handwheel for emergency manual operation.

Cylinders and pistons: aluminum alloy.

Construction features: as per normal type "FLAV" (2028).

N.B.: type "FLAV-PACV" valves are also supplied with DIN length over flanges (see TN 2028/A), with screwed ends (see TN 2028/B) and with angle body (see TN 2028/C).

Fermeture et ouverture de la vanne par admission d'air comprimé dans les cylindres pneumatiques. Avec volant de secours pour la manoeuvre manuelle.

Cylindres et pistons: en alliage en aluminium.

Caractéristiques constructives: identiques à celles du type "FLAV" normal (TN 2028).

N.B.: les vannes FLAV-POFV sont également fournies avec encombrements DIN (cfr. TN 2028/A), avec extrémités taraudées (cfr. TN 2028/B) et avec corps d'équerre (cfr. TN 2028/C).

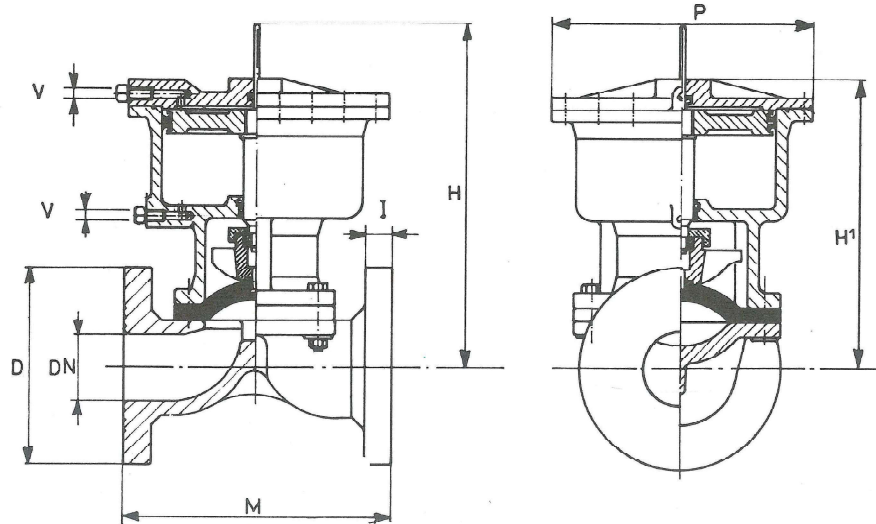


VALVOLE SIRSI - TIPO "FLAV-PAC" - PRESSIONE CHIUDE-APRE

TYPE "FLAV-PAC" - PRESSURE CLOSING AND OPENING SIRSI VALVES

VANNES SIRSI - TYPE "FLAV-POF" - PRESSION FERME-OUVRE

TN 2032/D



CARATTERISTICHE E DIMENSIONI - SPECIFICATIONS AND DIMENSIONS - CARACTERISTIQUES ET DIMENSIONS

DN	D	H	H ₁	I	M	P	V	Press. max. Bar	Pesi Weights - Poids Kg.
15	95	265	180	14	108	150	1/4" G	10	3,700
20	105	265	180	16	117	150	1/4" G	10	4,000
25	115	290	205	16	127	150	1/4" G	8	6,700
32	140	295	210	18	146	150	1/4" G	8	8,000
40	150	410	275	18	164	200	1/4" G	7	12,000
50	165	410	285	20	190	200	1/4" G	7	15,000
65	185	430	295	20	216	200	1/4" G	7	19,000
80	200	460	315	22	254	285	1/4" G	7	34,000
100	220	470	335	22	305	285	1/4" G	6	42,000
125	250	710	530	24	356	372	1/4" G	4	74,000
150	285	750	570	24	406	372	1/4" G	4	81,000
200	340	855	650	28	520	450	1/4" G	3	127,000
250	395	1070	720	32	635	450	1/4" G	3	202,000
300	445	1300	1100	32	749	450	1/4" G	3	236,000



Chiusura e apertura mediante immissione di aria compressa nel cilindro pneumatico.

Cilindro e pistone: in lega di alluminio.

Caratteristiche costruttive: identiche a quelle del tipo "FLAV" normale (TN 2028).

N.B.: le valvole FLAV-PAC vengono anche fornite con scartamenti DIN (cfr. TN 2028/A), con attacchi filettati (cfr. TN 2028/B) e con corpo a squadra (cfr. TN 2028/C).

Delivery of compressed air to the pneumatic cylinder closes and opens the valve.

Cylinder and piston: aluminum alloy.

Construction features: as per normal type "FLAV" (TN 2028).

N.B.: type "FLAV-PAC" valves are also supplied with DIN length over flanges (see TN 2028/A), with screwed ends (see TN 2028/B) and with angle body (see TN 2028/C).

Fermeture et ouverture de la vanne par admission d'air comprimé dans le cylindre pneumatique.

Cylindre et piston: en alliage en aluminium.

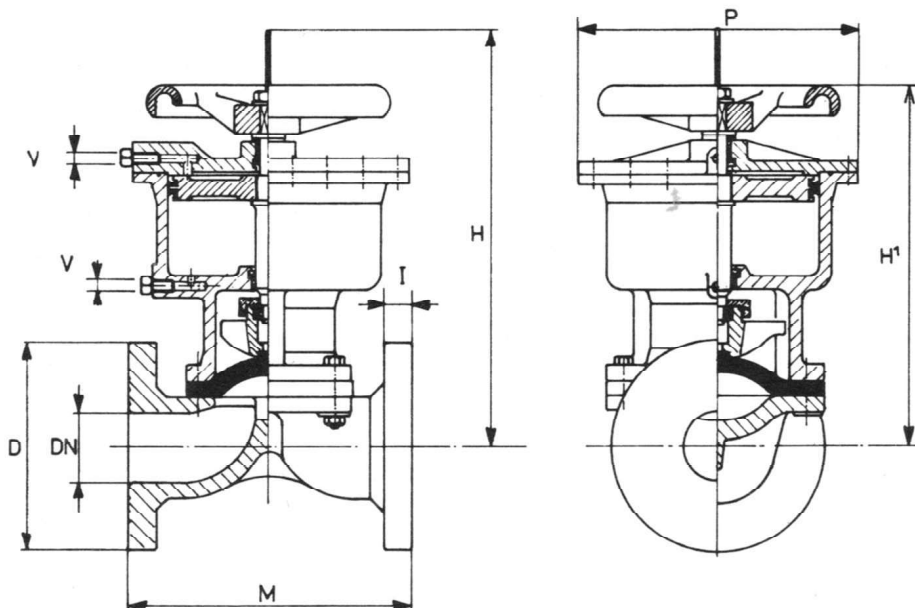
Caractéristiques constructives: identiques à celles du type "FLAV" normal (TN 2028).

N.B.: les vannes FLAV-POF sont également fournies avec encombrements DIN (cfr. TN 2028/A) avec extrémités taraudées (cfr. TN 2028/B) et avec corps d'équerre (cfr. TN 2028/C).



VALVOLE SIRSI - TIPO "FLAV-PACV" - PRESSIONE
 CHIUDE-APRE CON VOLANTINO DI EMERGENZA
 TYPE "FLAV-PACV" PRESSURE CLOSING AND
 OPENING VALVES WITH EMERGENCY HANDWHEEL
 VANNES SIRSI - TYPE "FLAV-POFV" - PRESSION
 FERME-OUVRE AVEC VOLANT DE SECOURS

TN 2031/D



CARATTERISTICHE E DIMENSIONI - SPECIFICATIONS AND DIMENSIONS - CARACTERISTIQUES ET DIMENSIONS

DN	D	H	H ₁	I	M	P	V	Press. max. Bar	Pesi Weights - Poids Kg.
15	95	265	240	14	108	150	1/4" G	5	3,800
20	105	265	240	16	117	150	1/4" G	5	4,000
25	115	290	260	16	127	150	1/4" G	5	6,500
32	140	295	260	18	146	150	1/4" G	5	8,000
40	150	410	330	18	164	200	1/4" G	4	12,000
50	165	410	330	20	190	200	1/4" G	4	16,500
65	185	430	350	20	216	200	1/4" G	4	21,500
80	200	460	380	22	254	285	1/4" G	4	35,000
100	220	470	390	22	305	285	1/4" G	4	44,000
125	250	710	600	24	356	372	1/4" G	4	75,000
150	285	750	630	24	406	372	1/4" G	3	85,000
200	340	855	725	28	520	450	1/4" G	3	130,000
250	395	1070	950	32	635	450	1/4" G	3	211,500
300	445	1300	1150	32	749	450	1/4" G	3	240,000



Chiusura e apertura della valvola mediante immissione di aria compressa nei cilindri pneumatici. Munita di volantino per la manovra manuale di emergenza.

Cilindri e pistoni: in lega di alluminio.

Caratteristiche costruttive: identiche a quelle del tipo "FLAV" normale (TN 2028).

N.B.: le valvole FLAV-PACV vengono anche fornite con scartamenti DIN (cfr. TN 2028/A), con attacchi filettati (cfr. TN 2028/B) e con corpo a squadra (cfr. TN 2028/C).

Delivery of compressed air to the pneumatic cylinders closes and opens the valve. With handwheel for emergency manual operation.

Cylinders and pistons: aluminum alloy.

Construction features: as per normal type "FLAV" (2028).

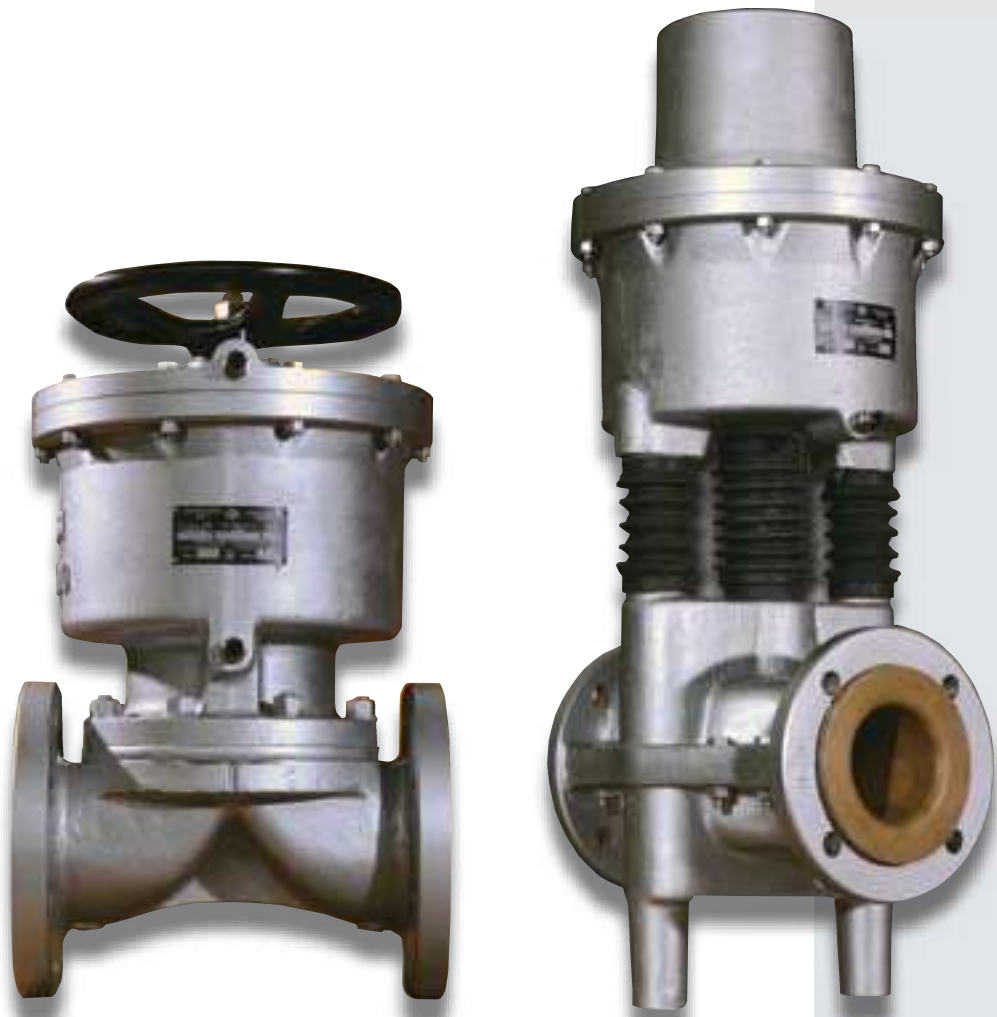
N.B.: type "FLAV-PACV" valves are also supplied with DIN length over flanges (see TN 2028/A), with screwed ends (see TN 2028/B) and with angle body (see TN 2028/C).

Fermeture et ouverture de la vanne par admission d'air comprimé dans les cylindres pneumatiques. Avec volant de secours pour la manoeuvre manuelle.

Cylindres et pistons: en alliage en aluminium.

Caractéristiques constructives: identiques à celles du type "FLAV" normal (TN 2028).

N.B.: les vannes FLAV-POFV sont également fournies avec encombrements DIN (cfr. TN 2028/A), avec extrémités taraudées (cfr. TN 2028/B) et avec corps d'équerre (cfr. TN 2028/C).



SV SIRSI VALVES